

APP CRS 346°	Rwy Idg 2998
	TDZE 1241
	Apt Elev 1241

RNAV (GPS) RWY 35

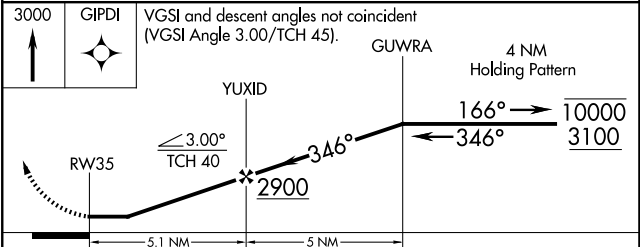
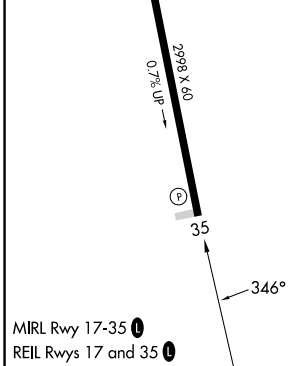
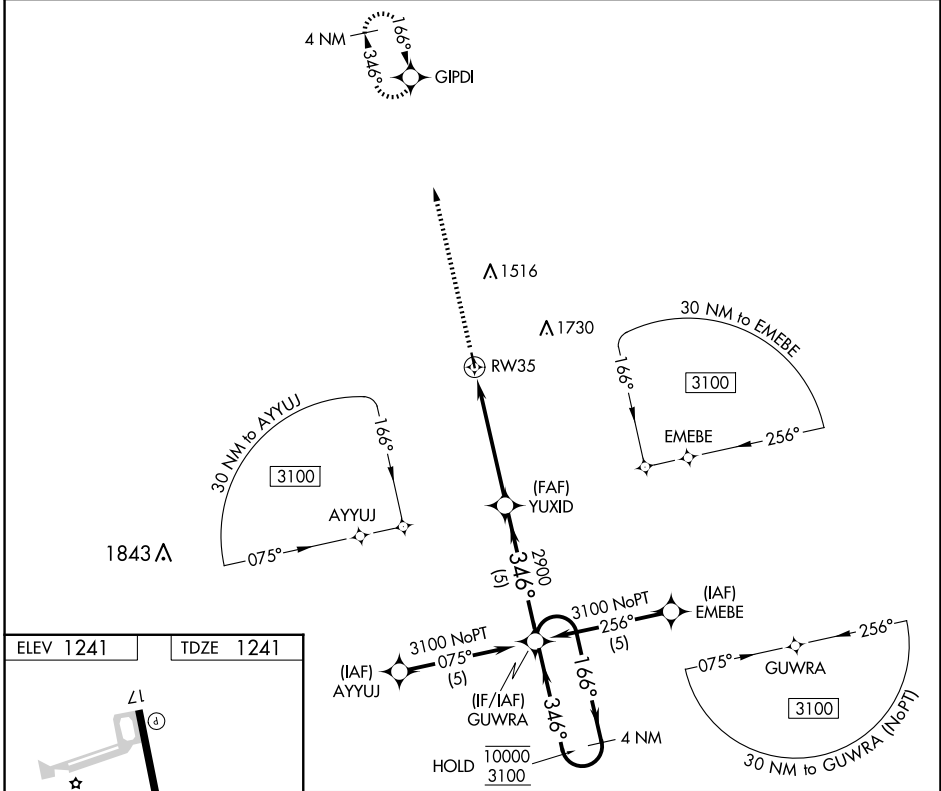
SALEM MEML (K33)

RNP APCH - GPS.

▼ Rwy 35 helicopter visibility reduction below 3/4 SM NA. When VIH altimeter setting not received, procedure NA. Use VIH altimeter setting.

▲ NA MISSED APPROACH: Climb to 3000 direct GIPDI and hold.

VIH ASOS 119.025	KANSAS CITY CENTER 128.35 284.675	CTAF 122.9
----------------------------	---	----------------------



CATEGORY	A	B	C	D
LNNAV MDA	1960-1	719 (800-1)	NA	
CIRCLING	1960-1	719 (800-1)	NA	

NC-3, 16 APR 2026 to 14 MAY 2026

NC-3, 16 APR 2026 to 14 MAY 2026