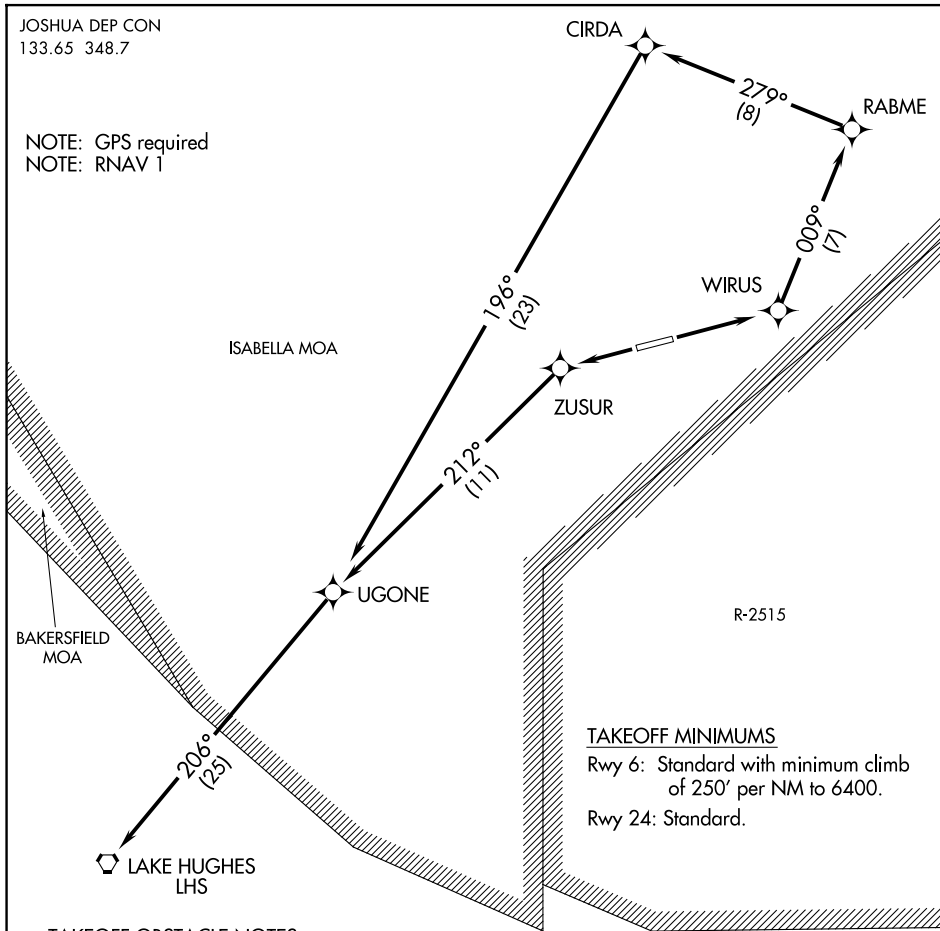


# CALIFORNIA CITY ONE DEPARTURE (OBSTACLE) (RNAV) CALIFORNIA CITY, CALIFORNIA

JOSHUA DEP CON  
133.65 348.7

NOTE: GPS required  
NOTE: RNAV 1



### TAKEOFF MINIMUMS

Rwy 6: Standard with minimum climb of 250' per NM to 6400.  
Rwy 24: Standard.

### TAKEOFF OBSTACLE NOTES

- Rwy 6: Ground 37' from DER, 408' right of centerline, 0' AGL/2406' MSL.
- Rwy 24: Windsock 8' from DER, 159' right of centerline, 25' AGL/2476' MSL.
- Bush 220' from DER, 456' left of centerline, 9' AGL/2467' MSL.
- Bush 550' from DER, 447' left of centerline, 16' AGL/2474' MSL.
- Bush 365' from DER, 299' left of centerline, 8' AGL/2469' MSL.
- Bush 245' from DER, 449' left of centerline, 8' AGL/2466' MSL.
- Bush 422' from DER, 454' left of centerline, 12' AGL/2470' MSL.
- Bush 355' from DER, 106' left of centerline, 6' AGL/2467' MSL.

NOTE: Chart not to scale.

### DEPARTURE ROUTE DESCRIPTION

TAKEOFF RUNWAY 6: Climb direct WIRUS, then via depicted route to LHS VORTAC. Maintain 9000.

TAKEOFF RUNWAY 24: Climb direct ZUSUR, then via depicted route to LHS VORTAC. Maintain 9000.