

# RNAV (GPS) RWY 24

CALIFORNIA CITY MUNI (L71)

APP CRS	Rwy Idg	<b>6027</b>
<b>227°</b>	TDZE	<b>2429</b>
	Apt Elev	<b>2454</b>

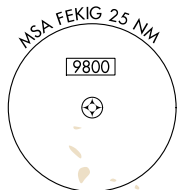
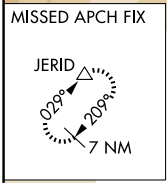
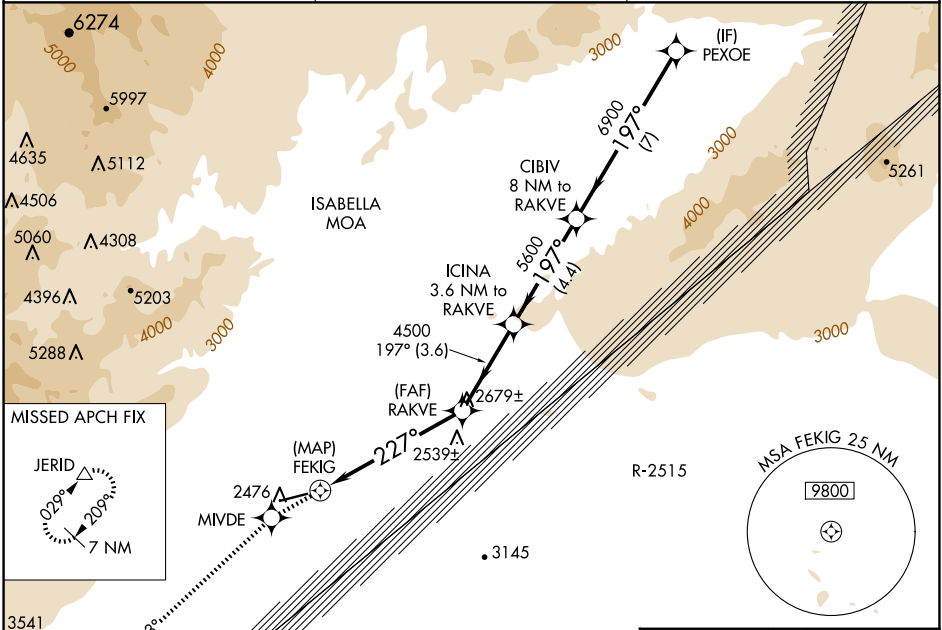
RNP APCH.

▼ If local altimeter setting not received, use Edwards AFB altimeter setting and increase all MDAs 60 feet; if neither received, procedure not authorized.

▲ NA

MISSED APPROACH: Climb to 9000 direct MIVDE and via 213° track to JERID and hold, continue climb-in-hold to 9000.

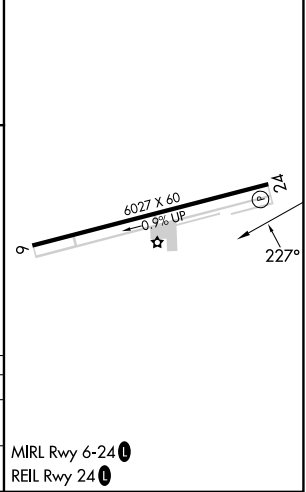
AWOS-1 <b>120.875</b>	JOSHUA APP CON <b>133.65 348.7</b>	UNICOM <b>122.7 (CTAF)</b>
--------------------------	---------------------------------------	-------------------------------



ELEV 2454	TDZE 2429
-----------	-----------

9000	MIVDE	JERID	VGSI and descent angles not coincident (VGSI Angle 3.00/TCH 40).	PEXOE	
213° tr					
	RAKVE	ICINA 3.6 NM to RAKVE	CIBIV 8 NM to RAKVE	9000	
				Procedure Turn NA	
	FEKIG				
	0.5	5.8 NM	3.6 NM	4.4 NM	7 NM

CATEGORY	A	B	C	D
LNAV MDA	2820-1 391 (400-1)			NA
CIRCLING	2960-1	506 (600-1)	3080-1¾ 626 (700-1¾)	NA



SW-3, 16 APR 2026 to 14 MAY 2026

SW-3, 16 APR 2026 to 14 MAY 2026