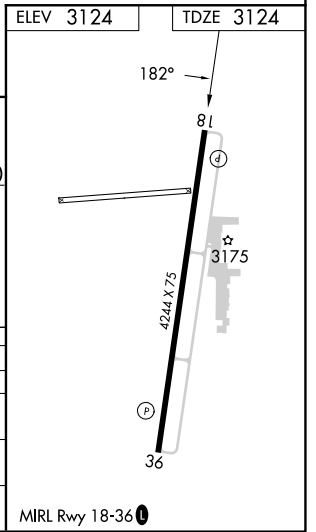
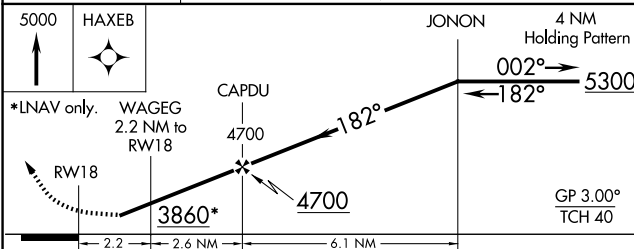
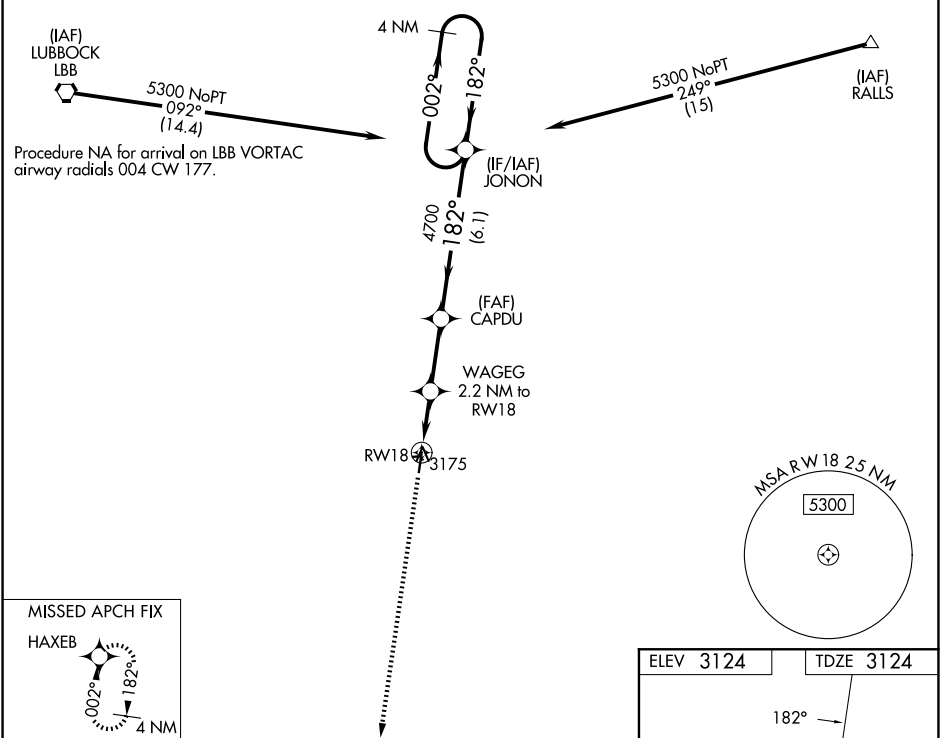


WAAS CH <b>42739</b> <b>W18A</b>	APP CRS <b>182°</b>	Rwy Ldg TDZE Apt Elev	<b>4244</b> <b>3124</b> <b>3124</b>
--	------------------------	-----------------------------	---

# RNAV (GPS) RWY 18

CITY OF SLATON/LARRY T NEAL MEML (F49)

<b>▼</b> <b>NA</b> Baro-VNAV NA. DME/DME RNP-0.3 NA. Rwy 18 helicopter visibility reduction below 3/4 SM NA.	MISSED APPROACH: Climb to 5000 direct HAXEB and hold.	
LBB ASOS <b>125.3 270.275</b>	LUBBOCK APP CON <b>119.2 351.8</b>	UNICOM <b>123.0</b> (CTAF) <b>0</b>



CATEGORY	A	B	C	D
LPV DA		3427-1	303 (400-1)	
LNAV/VNAV DA		3427-1	303 (400-1)	
LNAV MDA		3480-1	356 (400-1)	
CIRCLING	3680-1 556 (600-1)	3820-1 696 (700-1)	3820-2 696 (700-2)	3820-2 1/4 696 (700-2 1/4)

SC-2, 16 APR 2026 to 14 MAY 2026

SC-2, 16 APR 2026 to 14 MAY 2026

MIRL Rwy 18-36 **0**