

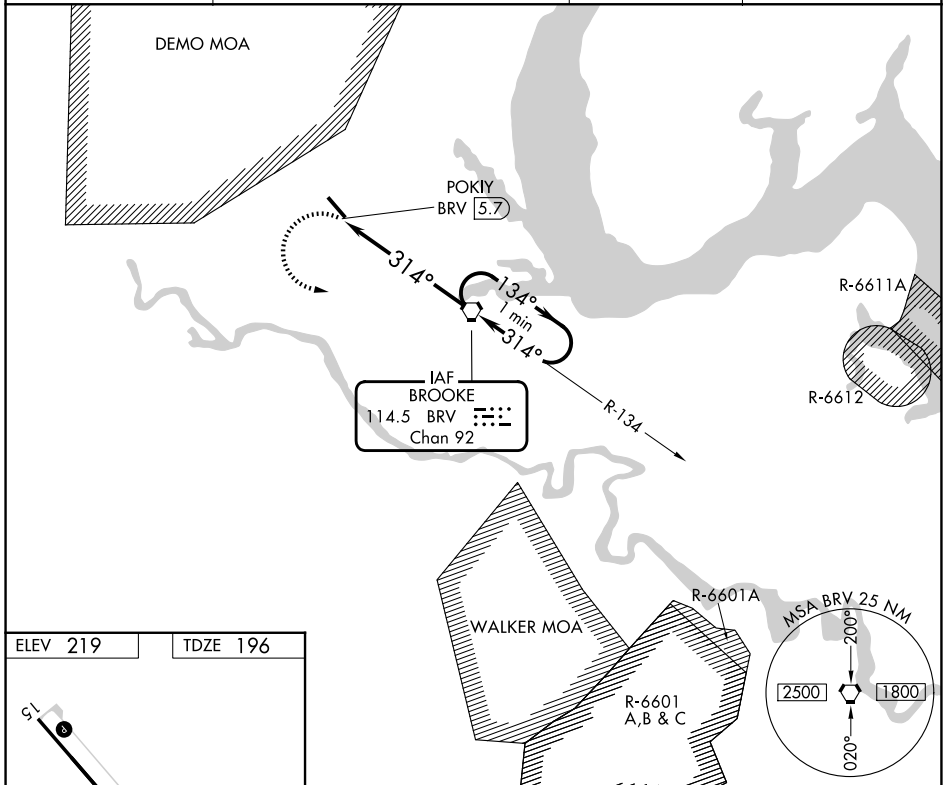
VORTAC BRV 114.5 Chan 92	APP CRS 314°	Rwy Ldg TDZE Apt Elev 6000 196 219
--	------------------------	--

VOR RWY 33

STAFFORD RGNL (R.MN)

<p>Inoperative table does not apply to Cat C. Circling Rwy 15 NA at night.</p>	<p>MALS</p>	<p>MISSED APPROACH: Climbing left turn to 2000 direct BRV VORTAC and hold.</p>

AWOS-3 126.325	QUANTICO APP CON * 127.05 290.375	GCO 135.075	UNICOM 122.725 (CTAF) 0
--------------------------	---	-----------------------	-----------------------------------

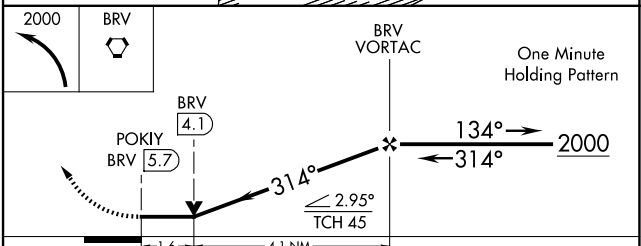


ELEV 219	TDZE 196
----------	----------

REIL Rwys 15
HIRL Rwy 15-33

FAF to MAP 5.7 NM

Knots	60	90	120	150	180
Min:Sec	5:42	3:48	2:51	2:17	1:54



CATEGORY	A	B	C	D
S-33	740- ³ / ₄ 544 (600- ³ / ₄)		740-1 ¹ / ₂ 544 (600-1 ¹ / ₂)	740-1 ³ / ₄ 544 (600-1 ³ / ₄)
CIRCLING	740-1 521 (600-1)	820-1 601 (700-1)	820-1 ³ / ₄ 601 (700-1 ³ / ₄)	1040-2 ³ / ₄ 821 (900-2 ³ / ₄)

NE-3, 16 APR 2026 to 14 MAY 2026

NE-3, 16 APR 2026 to 14 MAY 2026