

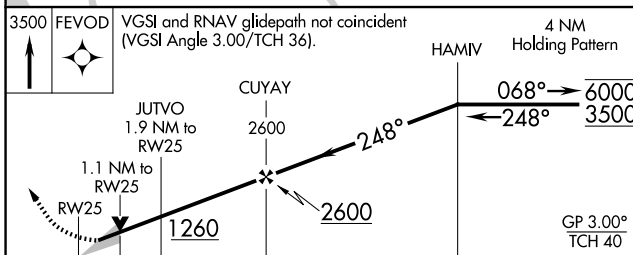
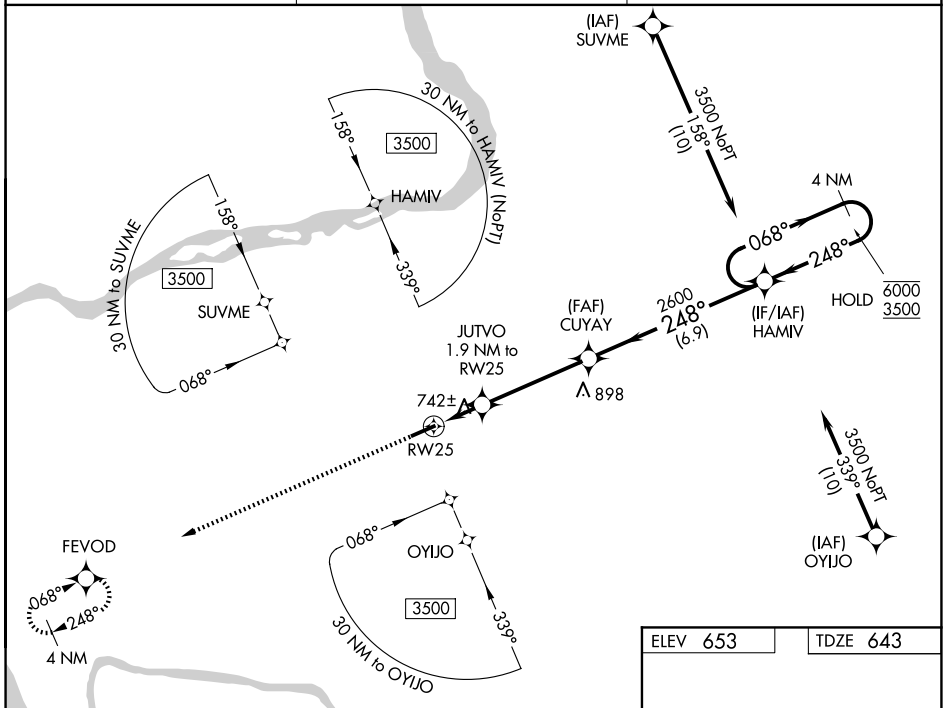
WAAS CH 86631 W25A	APP CRS 248°	Rwy Ldg TDZE Apt Elev	5001 643 653
--	------------------------	-----------------------------	---

RNAV (GPS) RWY 25

MARION-CRITTENDEN COUNTY JAMES C JOHNSON RGNL (GDA)

RNP APCH - GPS.	For uncompensated Baro-VNAV systems, LNAV/VNAV NA below -16°C or above 54°C.	MISSED APPROACH: Climb to 3500 direct FEVOD and hold.
-----------------	--	---

AWOS-3P 118.15	MEMPHIS CENTER 133.65 292.15	CTAF 122.9
--------------------------	--	----------------------



CATEGORY	A	B	C	D
LPV DA		893-1	250 (300-1)	
LNAV/VNAV DA		945-1	302 (300-1)	
LNAV MDA		1000-1	357 (400-1)	
CIRCLING	1160-1 507 (600-1)	1360-1 707 (800-1)	1380-2 727 (800-2)	1380-2¼ 727 (800-2¼)

ELEV 653	TDZE 643
----------	----------

This diagram shows the 5001 X 75 runway with a 0.5% UP slope. It includes altitudes of 5001 and 75 feet. The diagram also shows the missed approach procedure and the glide path.

SE-1, 16 APR 2026 to 14 MAY 2026

SE-1, 16 APR 2026 to 14 MAY 2026