

| | | | |
|--|------------------------|-----------------------------|---|
| WAAS CH 56540 W28A | APP CRS 283° | Rwy Ldg TDZE Apt Elev | 6000 4230 4230 |
|--|------------------------|-----------------------------|---|

RNAV (GPS) RWY 28

HAWTHORNE INDUSTRIAL (HTH)

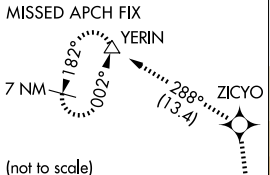
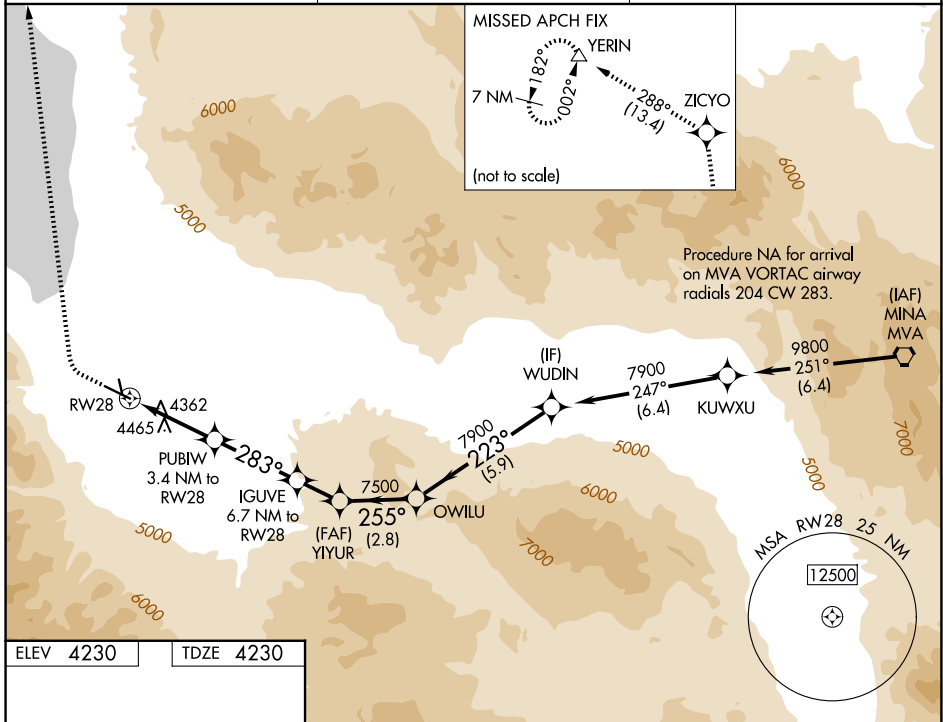
⚠ Circling NA to Rwy 15 and 33. When local altimeter setting not received, procedure NA. Circling NA south of Rwy 10-28. DME/DME RNP-0.3 NA. Rwy 28 helicopter visibility reduction below ¼ SM NA.

⚠ MISSED APPROACH: Climb to 4750 then climbing right turn to 10000 direct ZICYO and on track 288° to YERIN and hold.

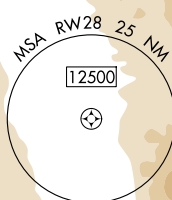
AWOS-3
120.225

OAKLAND CENTER
125.75 284.65

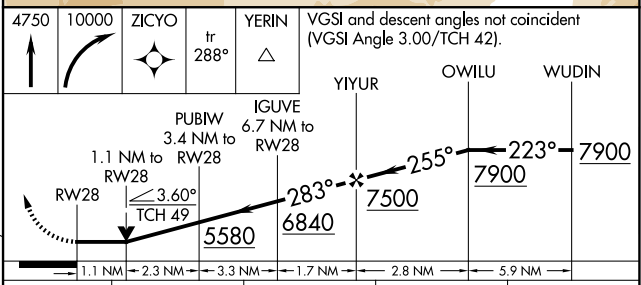
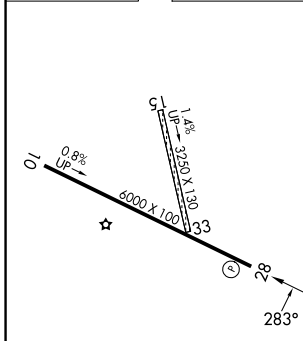
UNICOM
122.8 (CTAF) ①



Procedure NA for arrival on MVA VORTAC airway radials 204 CW 283. (IF) MINA MVA



| | |
|-----------|-----------|
| ELEV 4230 | TDZE 4230 |
|-----------|-----------|



| CATEGORY | A | B | C | D |
|----------|--------|-------------|-------------------------|----|
| LP MDA | 4620-1 | 390 (400-1) | 4620-1½ 390 (400-1½) | NA |
| LNAV MDA | 4720-1 | 490 (500-1) | 4720-1¾ 490 (500-1¾) | NA |
| CIRCLING | 4720-1 | 490 (500-1) | 5680-3 1450 (1500-3) | NA |

REIL Rwy 10 and 28 ①
MIRL Rwy 10-28 ①

SW-4, 16 APR 2026 to 14 MAY 2026

SW-4, 16 APR 2026 to 14 MAY 2026