

APP CRS	Rwy Idg	<b>2932</b>
<b>283°</b>	TDZE	<b>939</b>
	Apt Elev	<b>939</b>

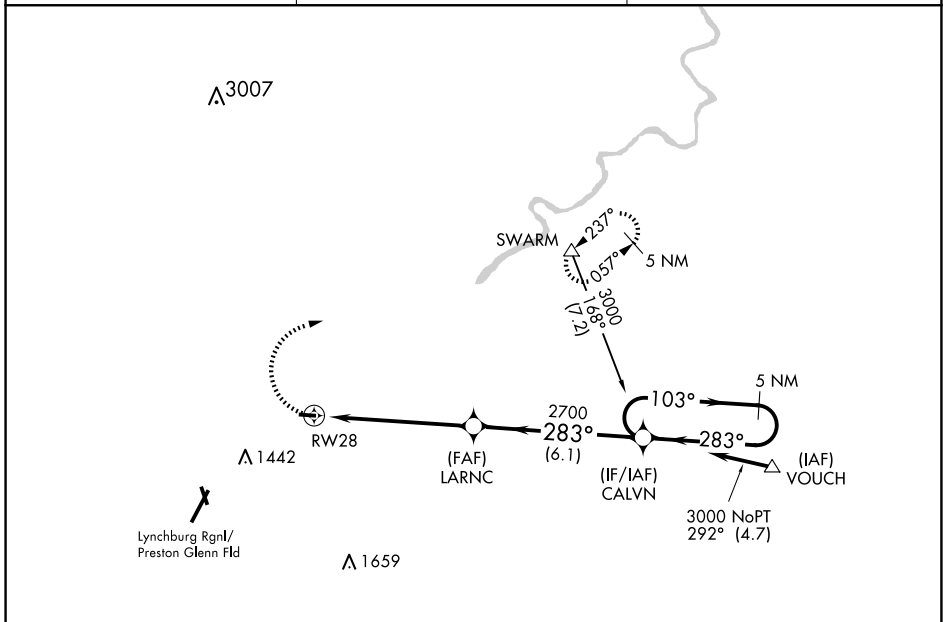
# RNAV (GPS) RWY 28

FALWELL (W24)

**⚠** DME/DME RNP-0.3 NA. Use Lynchburg Regional/Preston Glenn Fld altimeter setting, when not received use Farmville altimeter setting and increase all MDA 160 feet. Procedure NA at night.

**⚠** NA MISSED APPROACH: Climbing right turn to 3500 direct SWARM and hold.

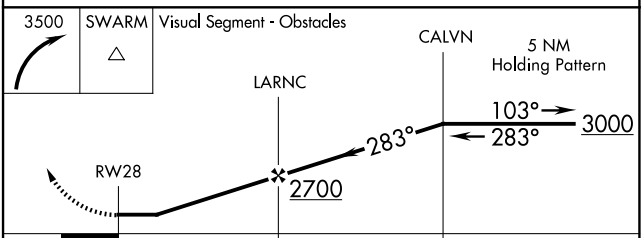
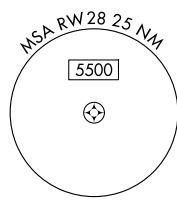
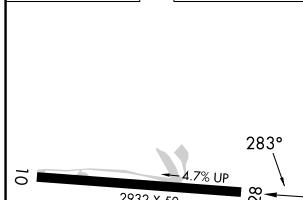
LYH ASOS <b>119.8</b>	ROANOKE APP CON <b>135.0 254.325</b>	UNICOM <b>123.0 (CTAF)</b>
--------------------------	---	-------------------------------



NE-3, 16 APR 2026 to 14 MAY 2026

NE-3, 16 APR 2026 to 14 MAY 2026

ELEV 939	TDZE 939
----------	----------



MIRL Rwy 10-28	5.7 NM	6.1 NM		
CATEGORY	A	B	C	D
LNAV MDA	1460-1	521 (600-1)		NA