

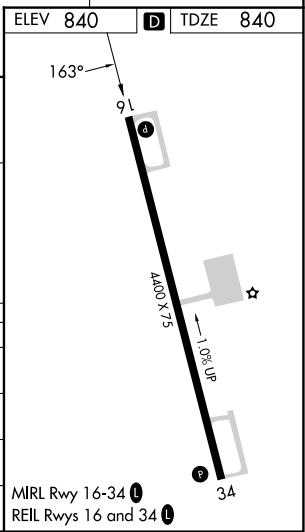
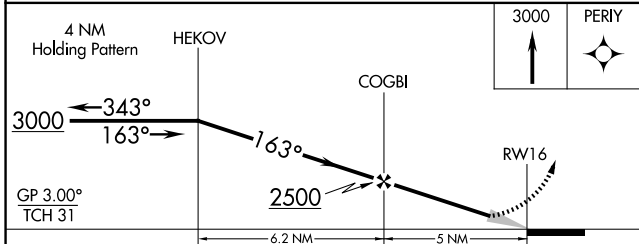
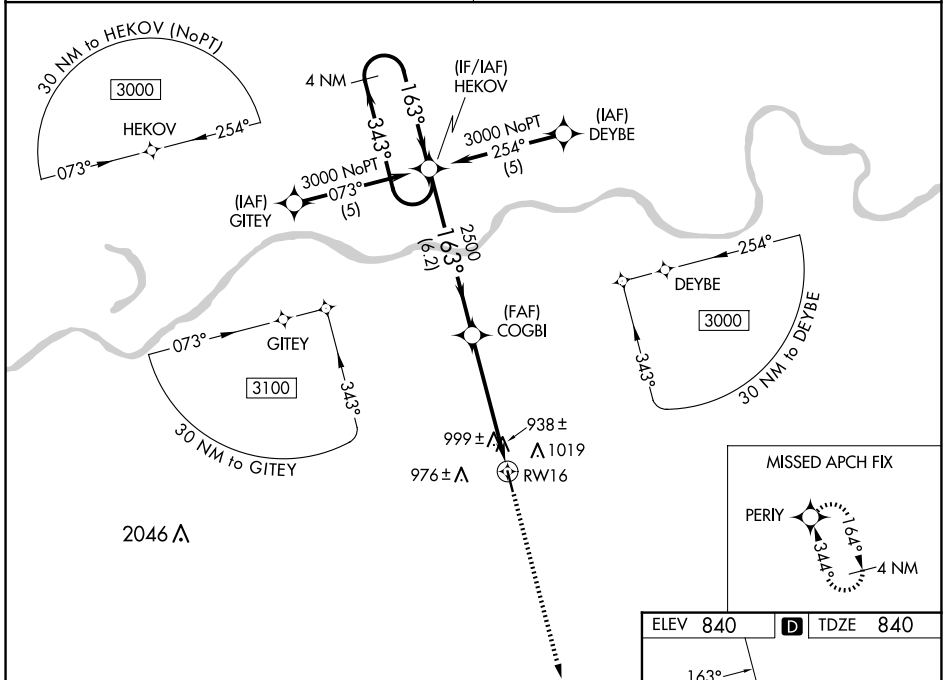
WAAS CH 86601 W16A	APP CRS 163°	Rwy Idg TDZE Apt Elev	4400 840 840
---------------------------------	------------------------	-----------------------------	---

RNAV (GPS) RWY 16

HIGGINSVILLE INDUSTRIAL MUNI (HIG)

RNP APCH - GPS		MISSED APPROACH: Climb to 3000 direct PERLY and hold.
<p>Baro-VNAV NA. Use Whiteman Air Force Base altimeter setting; when not received, use Kansas City/Lee's Summit Rgnl altimeter setting; increase LPV DA to 1293 feet and all visibilities ¼ SM; increase LNAV/VNAV DA to 1410 feet; increase all MDAs 60 feet, LNAV visibility Cat C ¼ SM and Circling visibility Cats C and D ¼ SM.</p>		

WHITEMAN APP CON ★ 127.45 284.0	UNICOM 122.8 (CTAF) 0
---	---------------------------------



CATEGORY	A	B	C	D
LPV DA	1247-1½ 407 (500-1½)			
LNAV/VNAV DA	1364-2 524 (600-2)			
LNAV MDA	1360-1 520 (600-1)	1360-1½ 520 (600-1½)	1360-1¾ 520 (600-1¾)	
CIRCLING	1440-1 600 (600-1)	1440-1½ 600 (600-1½)	1460-2 620 (700-2)	

NC-3, 16 APR 2026 to 14 MAY 2026

NC-3, 16 APR 2026 to 14 MAY 2026