

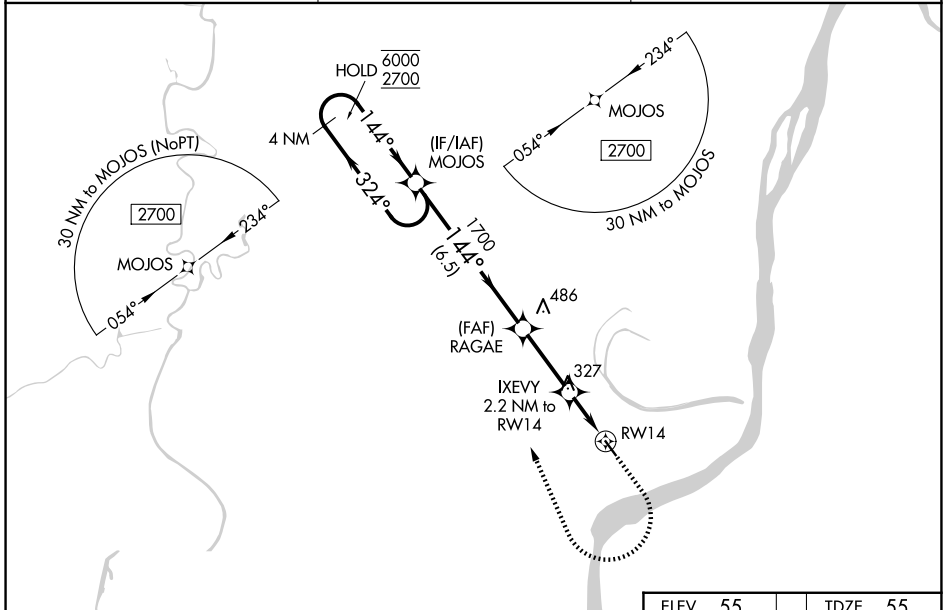
WAAS CH <b>78337</b> <b>W14A</b>	APP CRS <b>144°</b>	Rwy Ldg TDZE Apt Elev	<b>3701</b> <b>55</b> <b>55</b>
--	------------------------	-----------------------------	---------------------------------------

# RNAV (GPS) RWY 14

CONCORDIA PARISH (ØR4)

RNP APCH - GPS.	<p><b>MISSED APPROACH:</b> Climb to 1000 then climbing right turn to 3000 direct MOJOS and hold.</p>
<p><b>⚠</b> Rwy 14 helicopter visibility reduction below ¼ SM NA. For uncompensated Baro-VNAV systems, LNAV/VNAV NA below -15°C or above 54°C. When local altimeter setting not received, use Natchez altimeter setting and increase LPV DA to 408 feet; increase LNAV/VNAV DA to 540 feet and all visibilities ½ SM; increase all MDAs 60 feet and LNAV visibility Cat C ¼ SM, and Circling visibility Cat C ¼ SM. Baro-VNAV and VDP NA when using Natchez altimeter setting.</p>	

AWOS-3 <b>118.2</b>	HOUSTON CENTER <b>120.975 299.6</b>	UNICOM <b>122.8 (CTAF) 0</b>
------------------------	--	---------------------------------



SC-4, 16 APR 2026 to 14 MAY 2026

SC-4, 16 APR 2026 to 14 MAY 2026

4 NM Holding Pattern		MOJOS		ELEV 55	TDZE 55
<p>6000 ← 324°</p> <p>2700 → 144°</p>		<p>1700</p> <p>800</p>		<p>1000</p> <p>3000</p> <p>MOJOS</p>	
GP 3.00°		TCH 51		<p>144°</p> <p>3701 X 75</p>	
6.5 NM		2.8 NM		0.7 NM	
1.5 NM		2.2 NM to RWY 14		1.5 NM to RWY 14	
CATEGORY	A	B	C	D	
LPV DA	352-1 297 (300-1)			NA	
LNAV/VNAV DA	484-1¼ 429 (500-1¼)			NA	
LNAV MDA	580-1	525 (600-1)	580-1½ 525 (600-1½)	NA	
CIRCLING	680-1	625 (700-1)	960-2¾ 905 (1000-2¾)	NA	
					MIRL Rwy 14-32 0
					REIL Rwy 14 and 32 0