

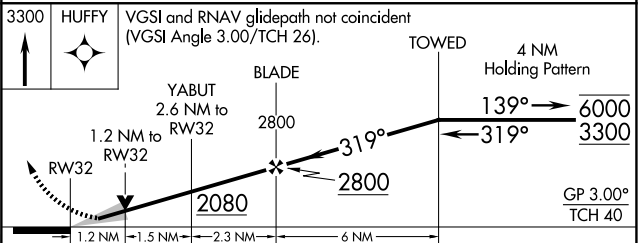
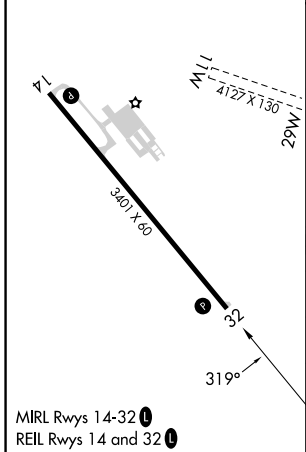
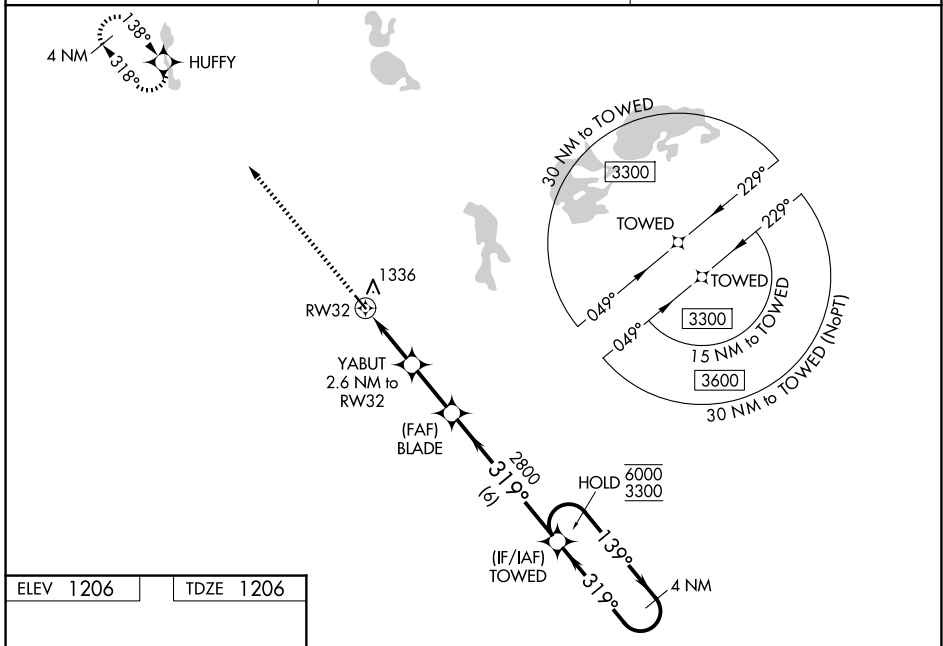
WAAS CH <b>53731</b> <b>W32A</b>	APP CRS <b>319°</b>	Rwy Ldg TDZE <b>1206</b> Apt Elev <b>1206</b>	<b>3401</b>
--	------------------------	---	-------------

# RNAV (GPS) RWY 32

ELBOW LAKE MUNI/PRIDE OF THE PRAIRIE (Y63)

RNP APCH - GPS.	<p>MISSED APPROACH: Climb to 3300 direct HUFFY and hold.</p>
<p>⚠ Circling NA northeast of Rwy 14-32. For uncompensated Baro-VNAV systems, LNAV/VNAV NA below -17°C or above 54°C. Baro-VNAV and VDP NA when using FFM altimeter setting. Circling NA to Rwy's 11W and 29W. When local altimeter setting not received, use FFM altimeter setting and increase LPV DA to 1506 feet; increase LNAV/VNAV DA to 1645 feet and all visibilities ½ SM; increase all MDAs 60 feet.</p>	

AWOS-3 <b>118.075</b>	MINNEAPOLIS CENTER <b>126.1 269.2</b>	CTAF <b>122.9</b>
--------------------------	--	----------------------



CATEGORY	A	B	C	D
LPV DA	1456-1	250 (300-1)		NA
LNAV/VNAV DA	1595-1½	389 (400-1½)		NA
LNAV MDA	1600-1	394 (400-1)		NA
CIRCLING	1600-1 394 (400-1)	1680-1 474 (500-1)		NA

NC-1, 16 APR 2026 to 14 MAY 2026

NC-1, 16 APR 2026 to 14 MAY 2026