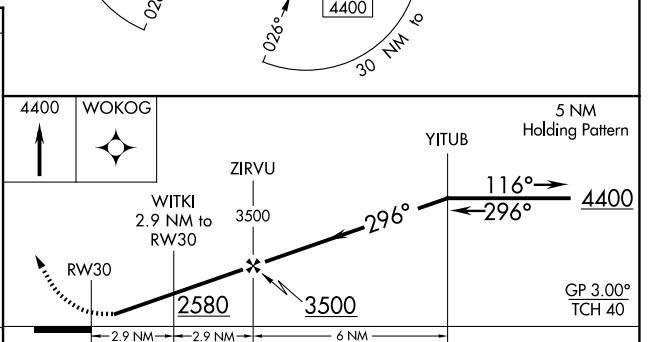
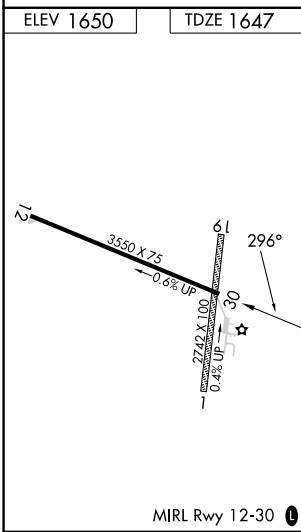
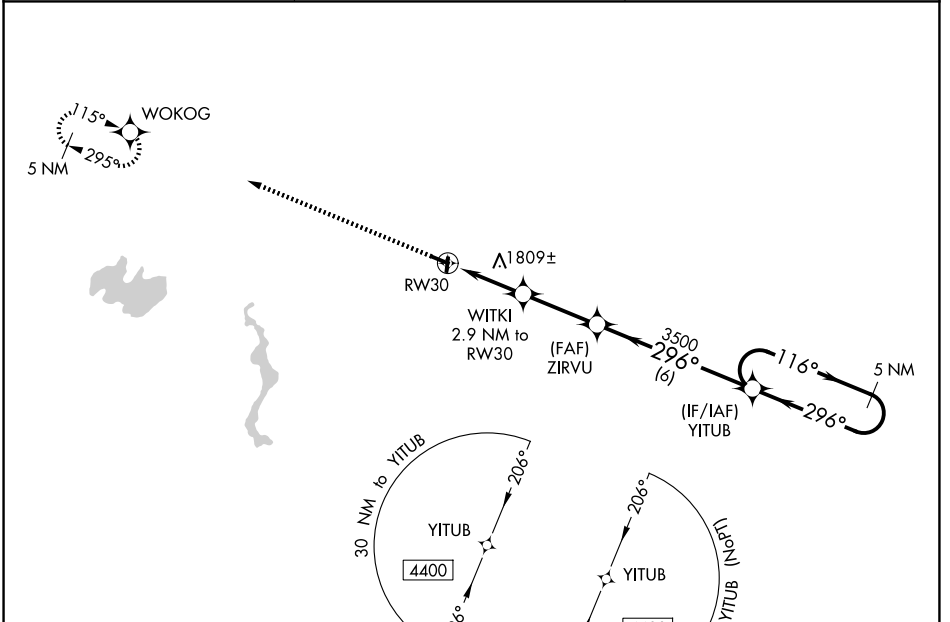


WAAS CH <b>62936</b> <b>W30A</b>	APP CRS <b>296°</b>	Rwy Ldg TDZE <b>1647</b> Apt Elev <b>1650</b>	<b>3550</b>
----------------------------------------	------------------------	-----------------------------------------------------	-------------

# RNAV (GPS) RWY 30

CRANDON/STEVE CONWAY MUNI (Y55)

RNP APCH - GPS.		MISSED APPROACH: Climb to 4400 direct WOKOG and hold.
<p><b>⚠</b> Baro-VNAV NA. Rwy 30 helicopter visibility reduction below 3/4 SM NA. Use Rhinelander altimeter setting, when not received, use Eagle River altimeter setting and increase LPV DA to 1965 feet; increase LNAV/VNAV DA to 2012 feet; increase all MDAs 20 feet. Circling to Rwsys 1, 19 NA.</p>		
RHI ASOS <b>126.825</b>	MINNEAPOLIS CENTER <b>133.65 281.5</b>	CTAF <b>122.9</b>



CATEGORY	A	B	C	D
LPV DA	1958-1	311 (400-1)		NA
LNAV/VNAV DA	2005-1	358 (400-1)		NA
LNAV MDA	2120-1	473 (500-1)	2120-1 3/8 473 (500-1 3/8)	NA
CIRCLING	2300-1 650 (700-1)	2340-1 690 (700-1)	2360-2 710 (800-2)	NA

EC-3, 16 APR 2026 to 14 MAY 2026

EC-3, 16 APR 2026 to 14 MAY 2026