

APP CRS	Rwy Ldg	4203
236°	TDZE	1593
	Apt Elev	1593

RNAV (GPS) Y RWY 22

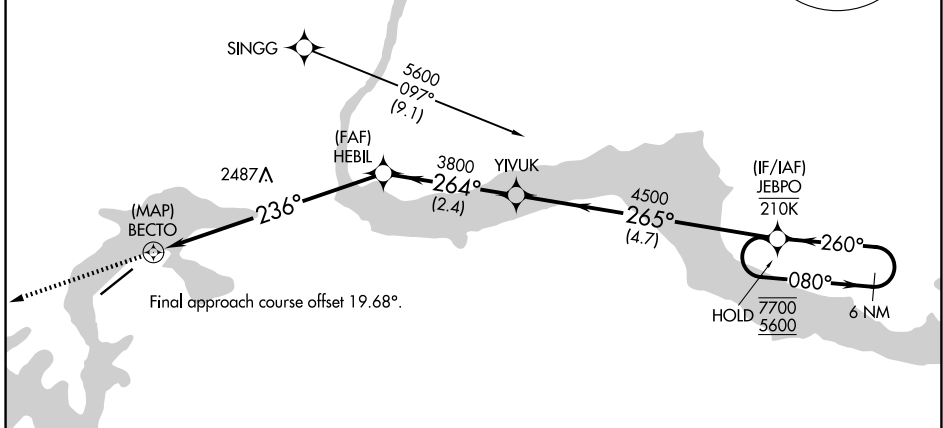
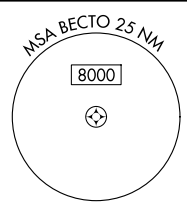
GRAND COULEE DAM (3W7)

RNP APCH - GPS.

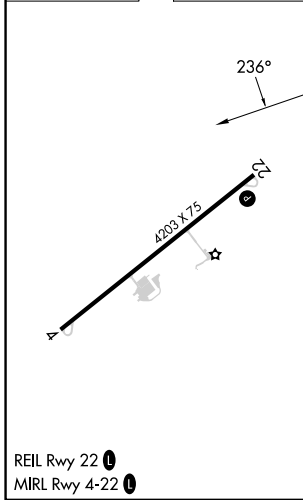
⚠ Rwy 22 helicopter visibility reduction below 1 SM NA. Procedure NA at night.
⚠ When local altimeter setting not received, use 29.92 altimeter setting and increase all MDAs 120 feet. Circling NA northwest of Rwy 4-22.

MISSED APPROACH: Climb to 7700 direct SCALK and on track 288° to KLSEY and hold, continue climb-in-hold to 7700.

AWOS-3PT 128.325	SEATTLE CENTER 126.1 291.6	CTAF 122.9
----------------------------	--------------------------------------	----------------------



ELEV 1593	TDZE 1593
-----------	-----------



7700	SCALK	tr 288°	KLSEY	JEBPO	6 NM Holding Pattern
	BECTO	HEBIL	YIVUK	7700	5600
	236°	264°	265°	080°	260°
	3800	4500			
0.5	4.3 NM	2.4 NM	4.7 NM		
CATEGORY	A	B	C	D	
LNAV MDA	2840-1¼ 1247 (1300-1¼)	2840-1½ 1247 (1300-1½)		NA	
CIRCLING	2840-1¼ 1247 (1300-1¼)	2860-2¼ 1267 (1300-2¼)		NA	

NW-1, 16 APR 2026 to 14 MAY 2026

NW-1, 16 APR 2026 to 14 MAY 2026