

WAAS CH 99537 W35A	APP CRS 353°	Rwy Ldg TDZE Apt Elev	5007 3610 3610
----------------------------------------	------------------------	-----------------------------	-------------------------------------------

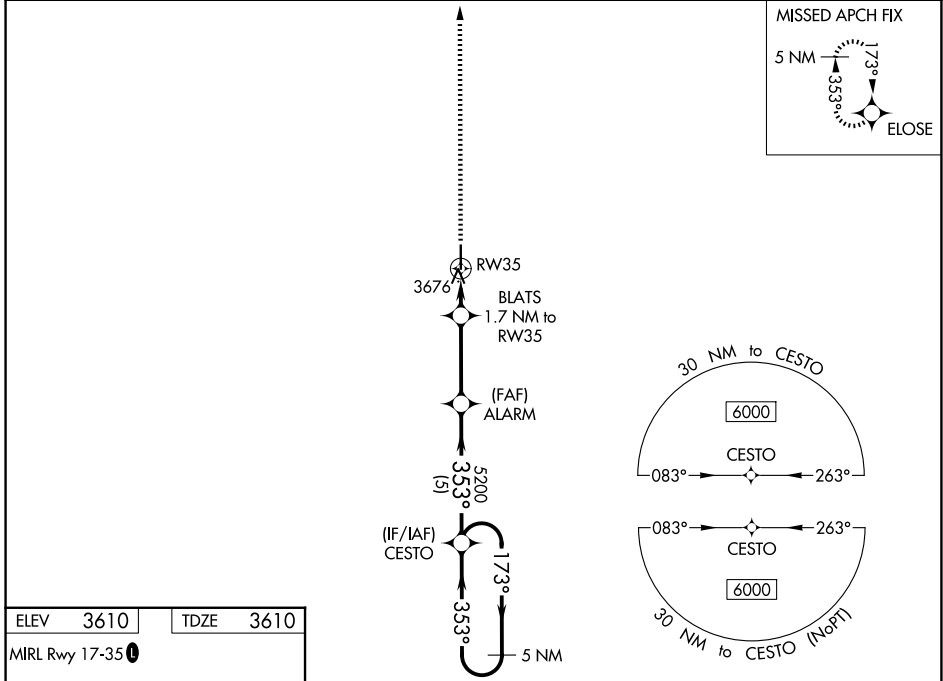
RNAV (GPS) RWY 35

TRIBUNE MUNI (5K2)

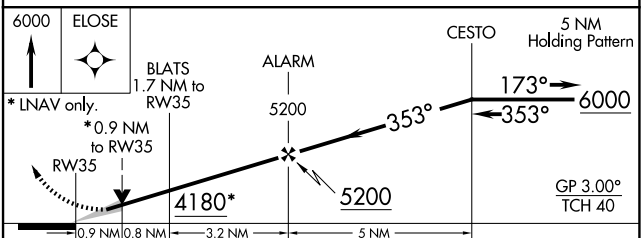
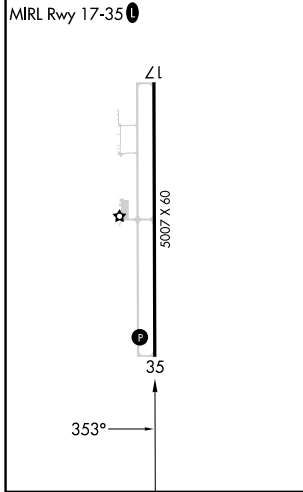
▽ Baro-VNAV NA when using Syracuse altimeter setting. For uncompensated Baro-VNAV systems, LNAV/VNAV NA below -22°C (-7°F) or above 54°C (130°F). DME/DME RNP-0.3 NA. VDP NA with Syracuse altimeter setting. When local altimeter setting not received, use Syracuse altimeter setting and increase all DA 103 feet and all MDA 120 feet, increase LPV/LNAV/VNAV visibility ¼ mile all Cats, and LNAV visibility Cat C ⅜ mile and Circling visibility Cat C ¼ mile.

△ NA MISSED APPROACH: Climb to 6000 direct ELOSE and hold.

AWOS-3PT 119.075	DENVER CENTER 133.4 377.175	UNICOM 122.8 (CTAF)
----------------------------	---------------------------------------	-------------------------------



ELEV 3610	TDZE 3610
-----------	-----------



CATEGORY	A	B	C	D
LPV DA		3860-1 250 (300-1)		NA
LNAV/VNAV DA		3860-1 250 (300-1)		NA
LNAV MDA		3940-1 330 (400-1)		NA
CIRCLING	4300-1	690 (700-1)	4300-2 690 (700-2)	NA

NC-2, 16 APR 2026 to 14 MAY 2026

NC-2, 16 APR 2026 to 14 MAY 2026