

WAAS CH <b>53532</b> <b>W36A</b>	APP CRS <b>002°</b>	Rwy Ldg <b>5003</b> TDZE <b>235</b> Apt Elev <b>239</b>
--	------------------------	---

# RNAV (GPS) RWY 36

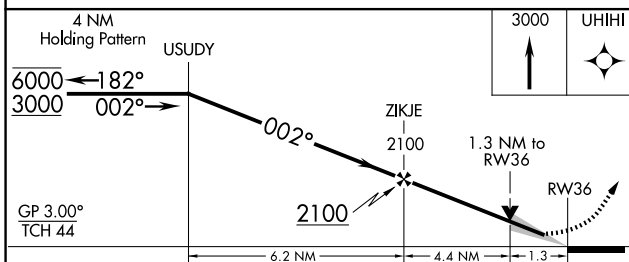
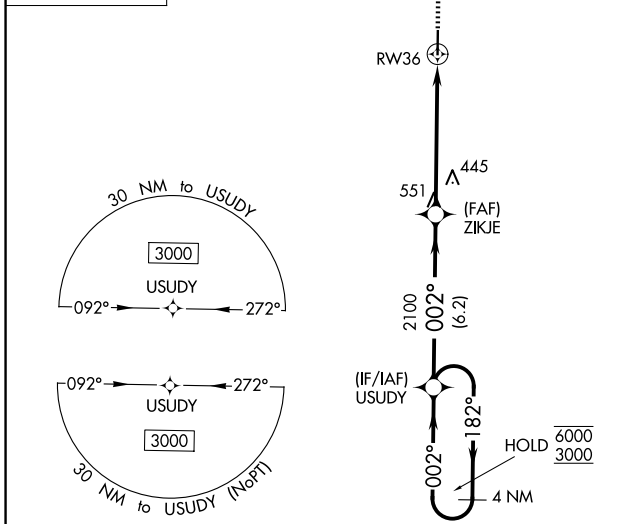
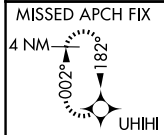
DELTA RGNL (DRP)

RNP APCH - GPS.

**⚠** Baro-VNAV and VDP NA when using West Memphis altimeter setting. For uncompensated Baro-VNAV systems, LNAV/VNAV NA below -15°C or above 54°C. When local altimeter setting not received, use West Memphis altimeter setting; increase LPV DA to 503 feet and all visibilities ½ SM; increase LNAV/VNAV DA to 755 feet; increase all MDAs 80 feet.

**MISSED APPROACH:** Climb to 3000 direct UHIHI and hold, continue climb-in-hold to 3000.

AWOS-3P <b>120.0</b>	MEMPHIS CENTER <b>135.3 335.8</b>	UNICOM <b>123.0 (CTAF)</b>
-------------------------	--------------------------------------	-------------------------------



ELEV 239	TDZE 235
HIRL Rwy 18-36 REL Rwy 18 & 36	

81

5003 X 75

36

002°

CATEGORY	A	B	C	D
LPV DA	435- <sup>3</sup> / <sub>4</sub>	200 (200- <sup>3</sup> / <sub>4</sub> )		NA
LNAV/VNAV DA	687-1 <sup>3</sup> / <sub>8</sub>	452 (500-1 <sup>3</sup> / <sub>8</sub> )		NA
LNAV MDA	700-1	465 (500-1)		NA
CIRCLING	760-1	521 (600-1)		NA

SC-1, 16 APR 2026 to 14 MAY 2026

SC-1, 16 APR 2026 to 14 MAY 2026