

(HOMME1.HOMME) 17285

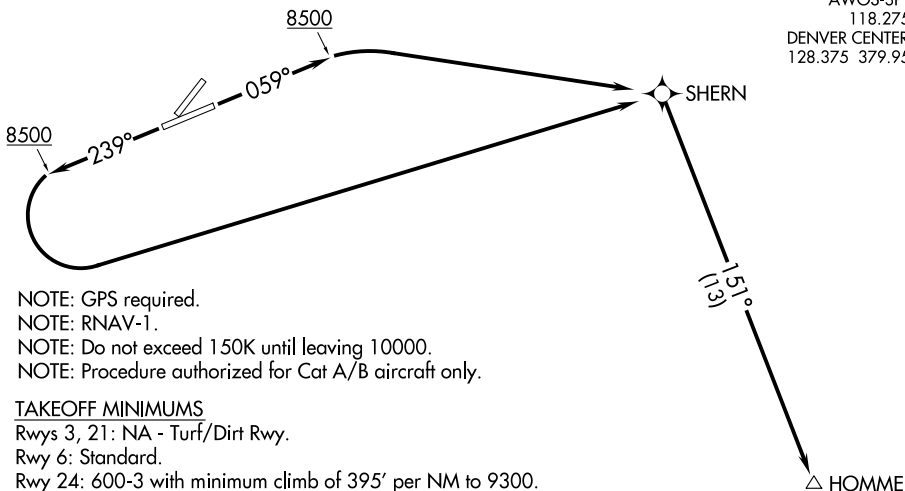
# HOMME ONE DEPARTURE (OBSTACLE) (RNAV)

ASTRONAUT KENT ROMINGER (RCV)

AL-11002 (FAA)

DEL NORTE, COLORADO

AWOS-3PT  
118.275  
DENVER CENTER  
128.375 379.95



- NOTE: GPS required.
- NOTE: RNAV-1.
- NOTE: Do not exceed 150K until leaving 10000.
- NOTE: Procedure authorized for Cat A/B aircraft only.

### TAKEOFF MINIMUMS

- Rwys 3, 21: NA - Turf/Dirt Rwy.
- Rwy 6: Standard.
- Rwy 24: 600-3 with minimum climb of 395' per NM to 9300.

### TAKEOFF OBSTACLE NOTES

- Rwy 6: REIL 38' from DER, 76' left of centerline, 3' AGL/7891' MSL. REIL 38' from DER, 77' right of centerline, 4' AGL/7891' MSL. Terrain 90' from DER, 460' left of centerline, 7892' MSL. Bush 140' from DER, 373' left of centerline, 2' AGL/7894' MSL. Terrain 172' from DER, 528' left of centerline, 7895' MSL. Bush 240' from DER, 428' left of centerline, 7896' MSL. Terrain 4704' from DER, 1659' left of centerline, 8008' MSL. Terrain 4729' from DER, 1763' left of centerline, 8014' MSL. Terrain and tree beginning 4807' from DER, 1468' left of centerline, up to 8028' MSL.
- Rwy 24: Terrain 11' from DER, 153' right of centerline, 7958' MSL. Terrain and bush beginning 15' from DER, 243' right of centerline, up to 7973' MSL. Terrain and bush beginning 234' from DER, 222' right of centerline, up to 7976' MSL. Terrain and bush beginning 518' from DER, 428' right of centerline, up to 7977' MSL. Terrain 619' from DER, 583' right of centerline, 7979' MSL. Terrain and bush beginning 703' from DER, 514' right of centerline, up to 7983' MSL. Bush 818' from DER, 654' right of centerline, 7984' MSL. Vehicles on road and terrain beginning 926' from DER, 583' right of centerline, up to 8002' MSL. Terrain 1335' from DER, 763' left of centerline, 7999' MSL. Terrain beginning 1389' from DER, 591' left of centerline, 8000' MSL. Bush 1462' from DER, 742' left of centerline, 8037' MSL. Terrain and tree beginning 1534' from DER, 482' left of centerline, up to 8065' MSL. Terrain beginning 1683' from DER, 413' left of centerline, up to 8106' MSL. Terrain beginning 1900' from DER, 499' left of centerline, up to 8147' MSL. Terrain beginning 2006' from DER, 400' left of centerline, up to 8191' MSL. Terrain beginning 2059' from DER, 428' left of centerline, up to 8195' MSL. Terrain and bush beginning 2164' from DER, 332' left of centerline, up to 8210' MSL. Terrain and bush beginning 2270' from DER, 427' left of centerline, up to 8228' MSL. Terrain 5615' from DER, 1931' right of centerline, 8099' MSL. Terrain, antenna and general utility beginning 5649' from DER, 1089' left of centerline, up to 5' AGL/8274' MSL. Terrain 6019' from DER, 1834' right of centerline, 8128' MSL. Terrain 6019' from DER, 1932' right of centerline, 8141' MSL. Terrain beginning 1 NM from DER, 1655' right of centerline, up to 8208' MSL. Terrain bush and tree beginning 1 NM from DER, 875' right of centerline, up to 8435' MSL. General utility and terrain beginning 1 NM from DER, 1840' right of centerline, up to 5' AGL/8427' MSL. Terrain, fence, tree and transmission tower beginning 1.7 NM from DER, 295' right of centerline, up to 8503' MSL. Terrain beginning 1.9 NM from DER, 63' left of centerline, up to 8352' MSL. Terrain 2.5 NM from DER, 1386' left of centerline, 8420' MSL.

NOTE: Chart not to scale.

### DEPARTURE ROUTE DESCRIPTION

**TAKEOFF RUNWAY 6:** Climb heading 059° to 8500, then climbing right turn to 10000 direct SHERN, thence. . . .

**TAKEOFF RUNWAY 24:** Climb heading 239° to 8500, then climbing left turn to 10000 direct SHERN, thence. . . .

. . . .on track 151° to HOMME, continue climb until reaching the MCA/MEA for direction of flight before proceeding on course.

# HOMME ONE DEPARTURE (OBSTACLE) (RNAV)

(HOMME1.HOMME) 12OCT17

DEL NORTE, COLORADO

ASTRONAUT KENT ROMINGER (RCV)

SW-1, 16 APR 2026 to 14 MAY 2026

SW-1, 16 APR 2026 to 14 MAY 2026