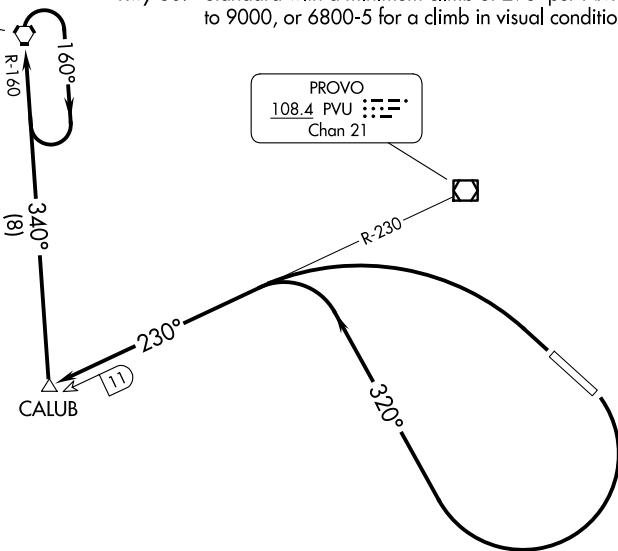
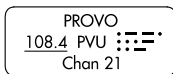
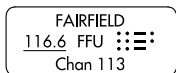


SALT LAKE CITY DEP CON
 118.85 233.7
 CTAF
 122.9

TAKEOFF MINIMUMS

Rwy 12: Standard with a minimum climb of 455' per NM to 7100, or 6800-5 for climb in visual conditions.

Rwy 30: Standard with a minimum climb of 298' per NM to 9000, or 6800-5 for a climb in visual conditions.



SW-4, 16 APR 2026 to 14 MAY 2026

SW-4, 16 APR 2026 to 14 MAY 2026

NOTE: Chart not to scale.

(CONTINUED ON FOLLOWING PAGE)

DEPARTURE ROUTE DESCRIPTION

TAKEOFF RUNWAY 12: Climbing right turn to 11 500 on heading 320° and PVU VOR/DME R-230 to CALUB INT/PVU 11 DME, do not exceed 240K until CALUB INT/PVU 11 DME, thence

TAKEOFF RUNWAY 30: Climbing left turn to 11 500 to intercept PVU VOR/DME R-230 to CALUB INT/PVU 11 DME, thence

. . . . Climbing right turn on FFU R-160 to FFU VORTAC and hold, continue climb-in-hold to cross FFU VORTAC at MCA/MEA for route of flight.

VCOA RUNWAYS 12, 30: Obtain ATC approval for VCOA when requesting IFR clearance. Climb in visual conditions to cross Spanish Fork Muni/Woodhouse Fld at or above 11 200 before proceeding on course.