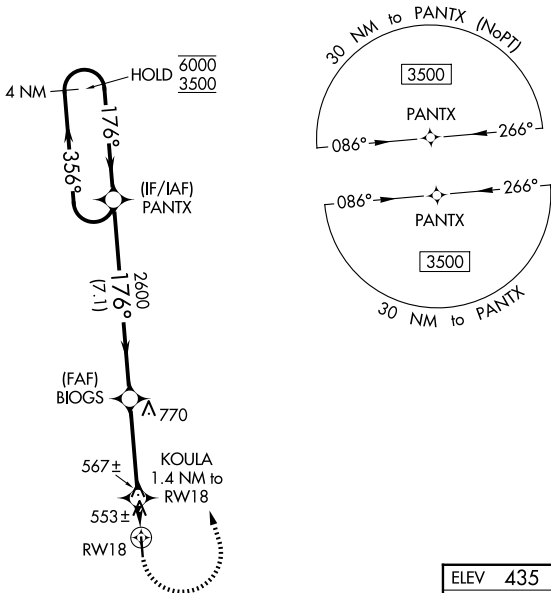


APP CRS	Rwy Ldg	4007
176°	TDZE	435
	Apt Elev	435

RNAV (GPS) RWY 18

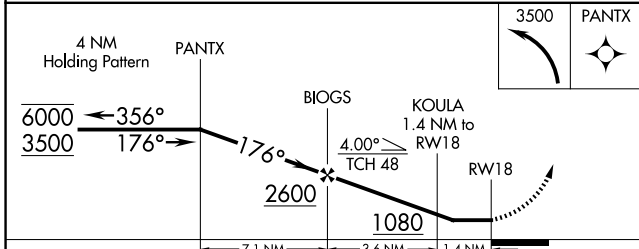
COPIAH COUNTY (M11)

RNP APCH.		MISSED APPROACH: Climbing left turn to 3500 direct PANTX and hold, continue climb-in-hold to 3500.	
<p>▼ Rwy 18 helicopter visibility reduction below 1 SM NA. Use Brookhaven altimeter setting, when not received, use Hawkins Fld altimeter setting and increase all MDA 40 feet. Straight-in Rwy 18 NA at night, Circling Rwy 18 NA at night.</p> <p>▲ NA</p>	1R7 AWOS-3P 118.125	MEMPHIS CENTER 132.5 259.1	CTAF 122.9



SC-4, 16 APR 2026 to 14 MAY 2026

SC-4, 16 APR 2026 to 14 MAY 2026



ELEV 435	TDZE 435
----------	----------

The vertical profile diagram shows the RNAV (GPS) RWY 18 approach. It starts at 435 ft TDZE, descends on 176° to 3600 ft at 8.1 NM from the runway. From 3600 ft, it descends to 2600 ft at 7.1 NM from the runway. From 2600 ft, it descends to 1080 ft at 1080° to RWY 18. A circling approach for RWY 18 is shown with a 553 ft MDA and a 567 ft ceiling. A 30 NM circle around PANTX is shown with a 3500 ft MDA and 086°/266° headings.

CATEGORY	A	B	C	D
LNVA MDA	860-1	425 (500-1)	NA	
CIRCLING	940-1 505 (600-1)	1140-1 705 (800-1)	NA	

MIRL Rwy 18-36
REIL Rwy 18 and 36