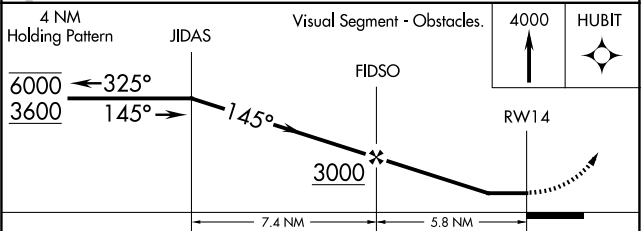
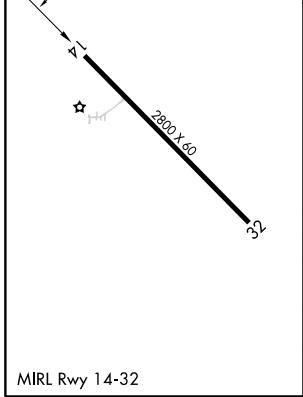
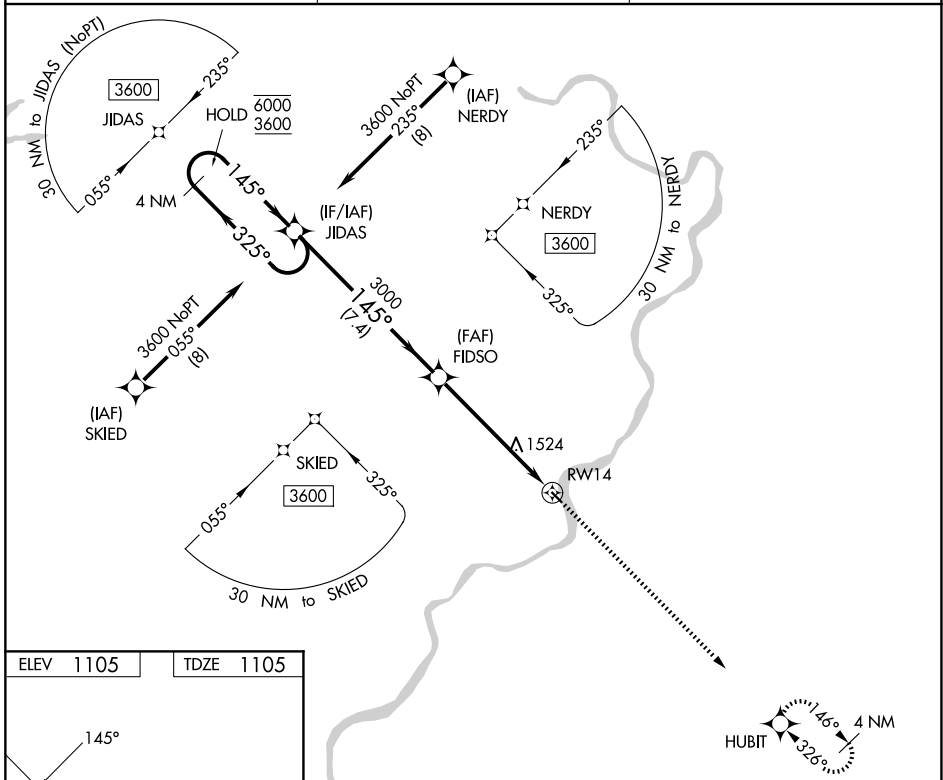


| | | | |
|--|------------------------|-----------------------------|---|
| WAAS CH 97343 W14A | APP CRS 145° | Rwy Ldg TDZE Apt Elev | 2800 1105 1105 |
|--|------------------------|-----------------------------|---|

RNAV (GPS) RWY 14

MCVILLE (6P7)

| | | |
|---|-------------------------------------|---|
| RNP APCH. | | MISSED APPROACH: Climb to 4000 direct HUBIT and hold. |
| Procedure NA at night. Rwy 14 helicopter visibility reduction below 1 SM NA. Use Pittsburgh/Butler Rgnl altimeter setting. | | |
| BTP AWOS-3PT 121.45 | JOHNSTOWN APP CON ★ 121.2 | UNICOM 123.0 (CTAF) |



| CATEGORY | A | B | C | D |
|----------|-----------------------|-----------------------|----|---|
| LP MDA | 1840-1 | 735 (800-1) | NA | |
| LNAV MDA | 1840-1 | 735 (800-1) | NA | |
| CIRCLING | 1860-1 755 (800-1) | 1880-1 775 (800-1) | NA | |

NE-4, 16 APR 2026 to 14 MAY 2026

NE-4, 16 APR 2026 to 14 MAY 2026