

# COPTER RNAV (GPS) 276°

APCH CRS <b>276°</b>	Rwy Idg TDZE Arprt Elev	N/A N/A <b>10</b>
-------------------------	-------------------------------	-------------------------

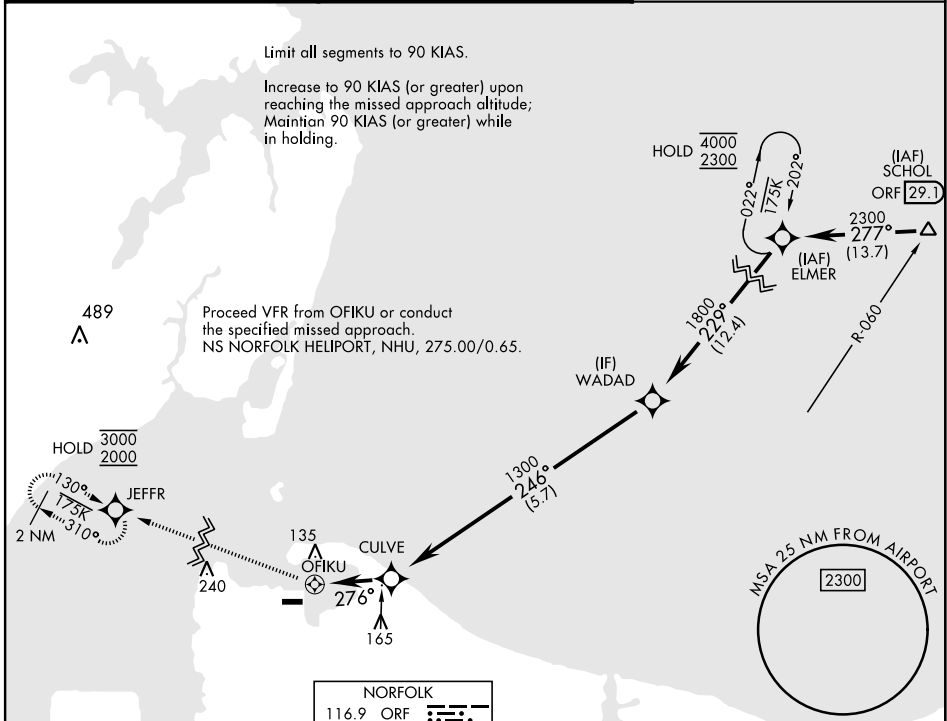
[USN]

NORFOLK NS HELIPORT (KNHU)

RNP APCH  
 Circling visibility reduction by helicopters not authorized.

MISSED APPROACH: Climbing right turn to 2000 direct JEFFR and hold.

CHAMBERS TOWER <b>124.3 379.15</b>	NAVY NORFOLK HEL TOWER <b>126.375 290.5</b>	GND CON <b>298.95</b>
---------------------------------------	--	--------------------------



Limit all segments to 90 KIAS.  
 Increase to 90 KIAS (or greater) upon reaching the missed approach altitude; Maintain 90 KIAS (or greater) while in holding.

Proceed VFR from OFIKU or conduct the specified missed approach.  
 NS NORFOLK HELIPORT, NHU, 275.00/0.65.

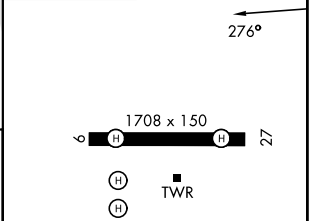
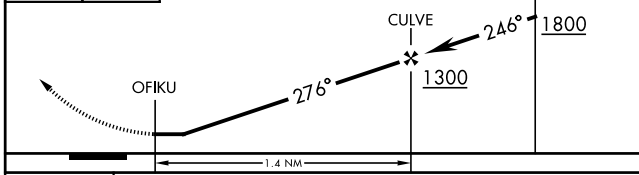
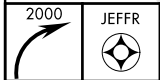
NE-3, 16 APR 2026 to 14 MAY 2026

NE-3, 16 APR 2026 to 14 MAY 2026

NORFOLK  
 116.9 ORF  
 Chan 116

ELEV 10

EMERG SAFE ALT 100 NM 4100



CATEGORY	COPTER		
CIRCLING	540-1	530	(600-1)



# COPTER RNAV (GPS) 276°