

COPTER TACAN 310

TACAN NGU Chan 86(Y)	APCH CRS 130°	Rwy Idg TDZE Arpt Elev N/A N/A 10
--------------------------------	-------------------------	---

[USN]

NORFOLK NS HELIPORT (KNHU)

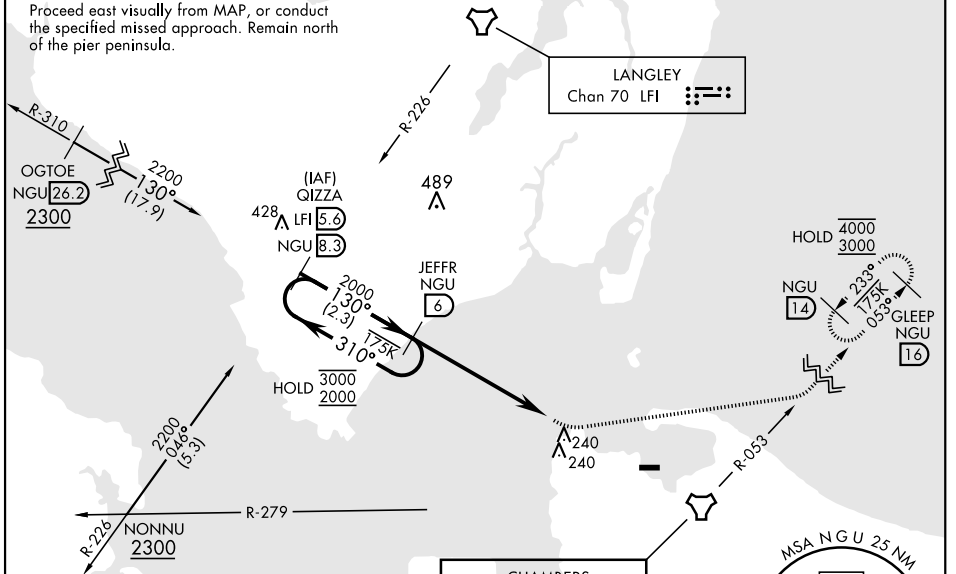
▼ Circling not authorized S of H2.
 MISSED APPROACH: Climbing left turn to 3000 to intercept NGU TACAN R-053 to GLEEP and hold.

CHAMBERS TOWER 124.3 379.15	NAVY NORFOLK HEL TOWER 126.375 290.5	GND CON 298.95
--	---	---------------------------------

Limit all segments to 90 KIAS.

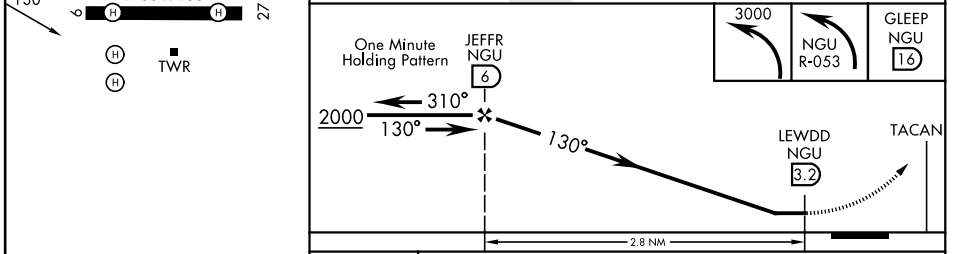
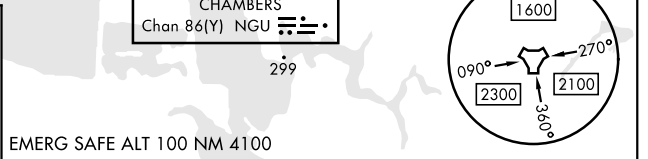
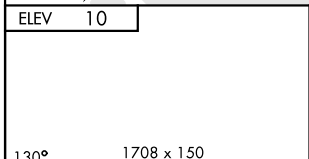
Increase to 90 KIAS (or greater) upon reaching the missed approach altitude. Maintain 90 KIAS (or greater) while in holding.

Proceed east visually from MAP, or conduct the specified missed approach. Remain north of the pier peninsula.



NE-3, 16 APR 2026 to 14 MAY 2026

NE-3, 16 APR 2026 to 14 MAY 2026



MIRL all rwys	2.8 NM	
CATEGORY	COPTER	
CIRCLING	540-1 $\frac{7}{8}$	530 (600-1 $\frac{7}{8}$)

COPTER TACAN 310