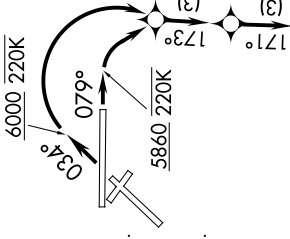
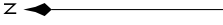


MNZNO THREE DEPARTURE (RNAV) AL-12 (FAA)

D-ATIS 118.0 257.7
 CLNC DEL 119.2 259.3
 CPDLC
 GND CON 121.9 348.6
 ALBUQUERQUE TOWER 120.3 351.9
 ALBUQUERQUE DEP CON 123.9 354.1

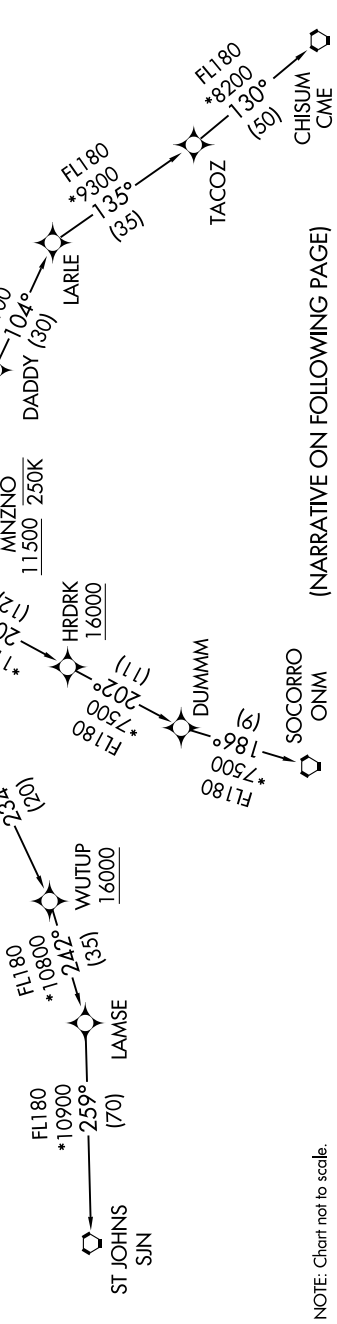


TOP ALTITUDE:
FL200

TAKEOFF MINIMUMS

Rwy 3: Standard with minimum climb of 500' per NM to 9000. Minimum obstacle climb gradient after YUGLU is 420' per NM to 11900.
 Rwy 8: Standard with minimum climb of 515' per NM to 9000. Minimum obstacle climb gradient after YUGLU is 420' per NM to 11900.

NOTE: Takeoff Rwy 3, do not exceed 220K until passing 6000.
 NOTE: Takeoff Rwy 8, do not exceed 220K until passing 5860.
 NOTE: Do not exceed 250K until passing MNZNO.
 NOTE: DME/DME/IRU or GPS required.
 NOTE: For turboprop aircraft only.
 NOTE: RNAV 1.
 NOTE: RADAR required.
 NOTE: If unable to accept climb gradient, advise ATC on initial contact.
 NOTE: For non-GPS equipped aircraft ONM DME must be operational.



NOTE: Chart not to scale.

(NARRATIVE ON FOLLOWING PAGE)

MNZNO THREE DEPARTURE (RNAV)