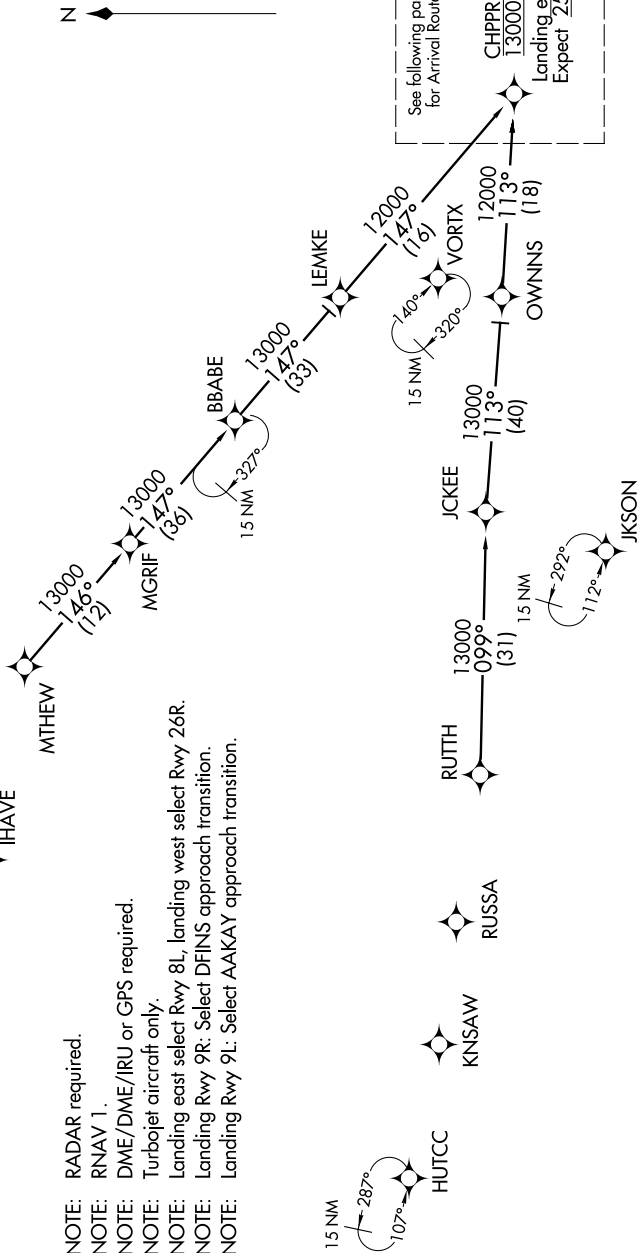


SE-4, 14 MAY 2026 to 11 JUN 2026

D-ATIS ARR
119.65
ATLANTA APP CON
128.0 379.9

BBABE TRANSITION [BBABE.CHPPR1]: For KHSV departures or assigned by ATC only.
LEMKE TRANSITION [LEMKE.CHPPR1]: For KCHA departures or assigned by ATC only.
MTHW TRANSITION [MTHW.CHPPR1]
RUITH TRANSITION [RUITH.CHPPR1]



- NOTE: RADAR required.
- NOTE: RNAV 1.
- NOTE: DME/DME/IRU or GPS required.
- NOTE: Turbojet aircraft only.
- NOTE: Landing east select Rwy 8L, landing west select Rwy 26R.
- NOTE: Landing Rwy 9R: Select DFINS approach transition.
- NOTE: Landing Rwy 9L: Select AAKAY approach transition.

See following page for Arrival Routes.

CHPPR
13000
Landing east:
Expect 250K

(CONTINUED ON FOLLOWING PAGES)

NOTE: Chart not to scale.

SE-4, 14 MAY 2026 to 11 JUN 2026