

GLAVN TWO ARRIVAL (RNAV) Transition Routes

SE-4, 14 MAY 2026 to 11 JUN 2026

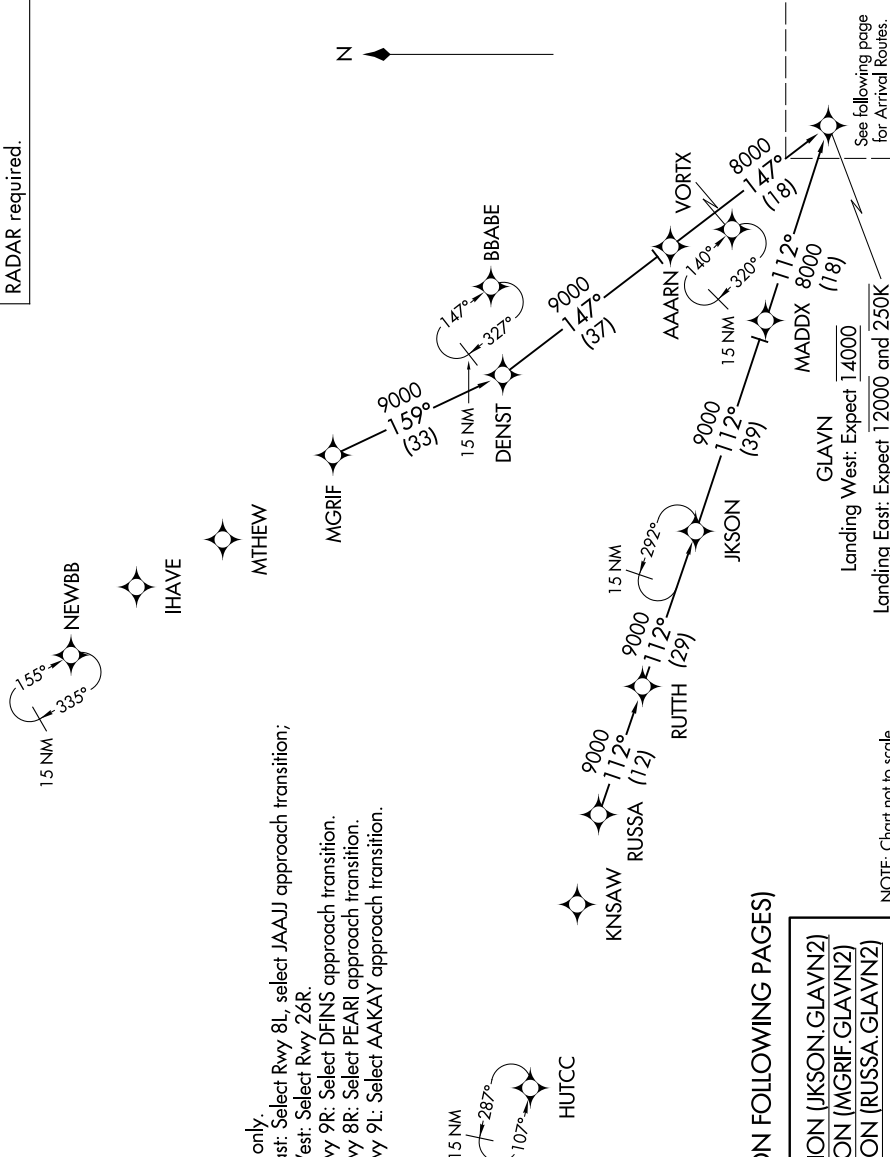
RNAV 1-DME/DME/IRU or GPS.  
RADAR required.

ATLANTA APP CON  
128.0 379.9  
D-ATIS ARR  
119.65

- NOTE: Jet aircraft only.
- NOTE: Landing East: Select Rwy 8L, select JAAJ approach transition; Landing West: Select Rwy 26R.
- NOTE: Landing Rwy 9R: Select DFINS approach transition.
- NOTE: Landing Rwy 8R: Select PEARL approach transition.
- NOTE: Landing Rwy 9L: Select AAKAY approach transition.

(CONTINUED ON FOLLOWING PAGES)

JKSON TRANSITION (JKSON.GLAVN2)  
MGRIF TRANSITION (MGRIF.GLAVN2)  
RUSSA TRANSITION (RUSSA.GLAVN2)



See following page for Arrival Routes.

Landing West: Expect 14000  
Landing East: Expect 12000 and 250K

NOTE: Chart not to scale.

SE-4, 14 MAY 2026 to 11 JUN 2026