

APP CRS Rwy Ldg **4837**
 TDZE **930**
 Apt Elev **952**

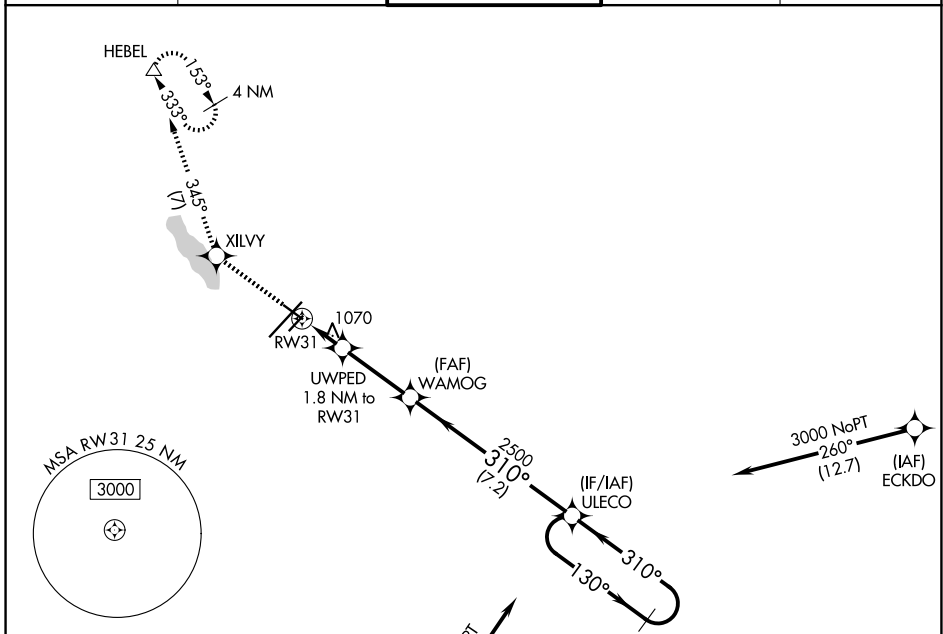
RNAV (GPS) RWY 31

BATTLE CREEK EXEC AT KELLOGG FLD (BTL)

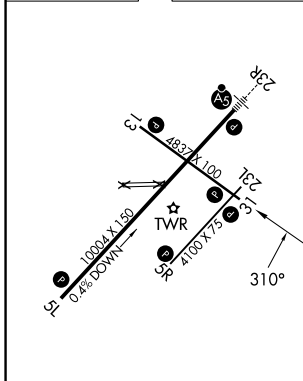
RNP APCH.
 Cirdling NA to Rwys 5R and 23L. Rwy 31 helicopter visibility reduction below 1 SM NA.
 Procedure NA at night.

MISSED APPROACH: Climb to 3000 direct XILVY and on 345° track to HEBEL and hold.

ATIS 128.325	GREAT LAKES APP CON★ 121.2 239.25	BATTLE CREEK TOWER★ 126.825 (CTAF)	GND CON 121.7	UNICOM 122.95
------------------------	---	--	-------------------------	-------------------------



ELEV 952 **D** TDZE 930



3000	XILVY	tr 345°	HEBEL	4 NM Holding Pattern
UWPED 1.8 NM to RW31	WAMOG	ULECO	130°	3000
RW31	TCH 40	2500	310°	VGSI and descent angles not coincident (VGSI Angle 3.00/TCH 25).
1.8 NM	3 NM	7.2 NM		

CATEGORY	A	B	C	D
LNAV MDA	1320-1	390 (400-1)	1320-1½	390 (400-1½)
CIRCLING	1420-1 468 (500-1)	1480-1 528 (600-1)	1520-1½ 568 (600-1½)	1520-2 568 (600-2)

HIRL Rwy 5L-23R
 MIRL Rwys 13-31 and 5R-23L
 REL Rwys 5L, 5R, 13, 23L and 31L

EC-1, 14 MAY 2026 to 11 JUN 2026

EC-1, 14 MAY 2026 to 11 JUN 2026