

LOC I-BZX <b>111.5</b>	APP CRS <b>131°</b>	Rwy Ldg <b>8794</b>
		TDZE <b>1655</b>
		Apt Elev <b>1661</b>

# ILS or LOC RWY 13

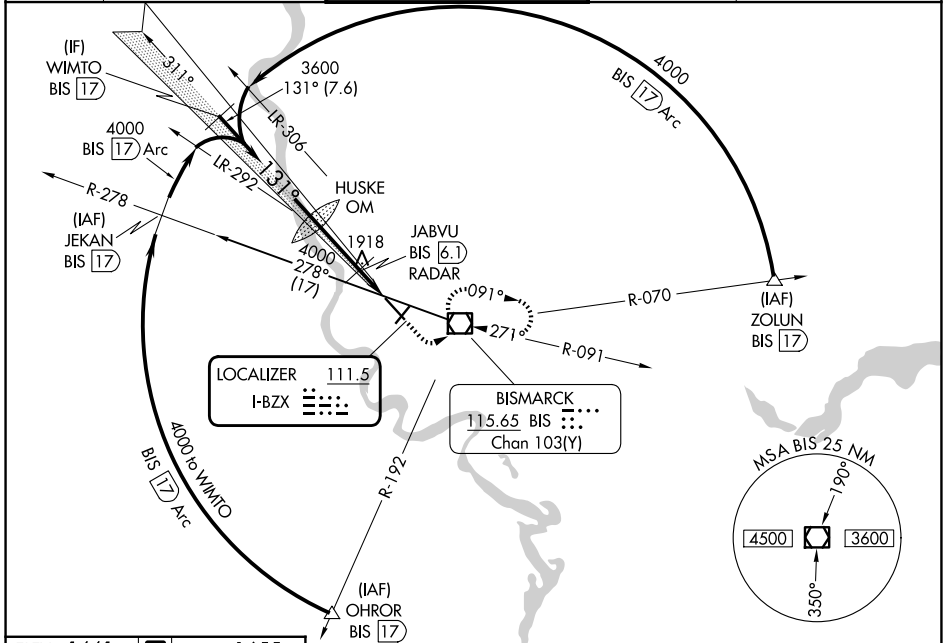
BISMARCK MUNI (BIS)

DME required for procedure entry. DME required.

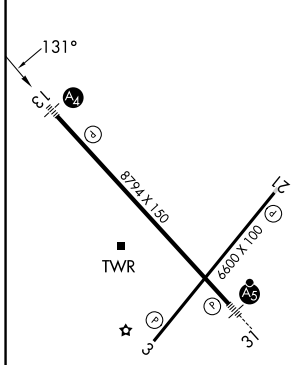
**ASR** Inop table does not apply to S-ILS 13. DME from BIS VOR/DME. Simultaneous reception of I-BZX and BIS DME required. # DME from BIS VOR/DME.

**MALS** MISSED APPROACH: Climb to 2200 then climbing left turn to 3600 direct BIS VOR/DME and hold, continue climb-in-hold to 3600.

ATIS <b>119.35</b>	BISMARCK APP CON ★ <b>126.3 298.9</b>	BISMARCK TOWER★ <b>118.3 (CTAF) 1257.8</b>	GND CON <b>121.9</b>	UNICOM <b>122.95</b>
-----------------------	--	---	-------------------------	-------------------------



ELEV 1661	<b>D</b>	TDZE 1655
-----------	----------	-----------



CATEGORY	A	B	C	D
S-ILS 13	1855-¾ 200 (200-¾)			
S-LOC 13	2380-¾	725 (800-¾)	2380-1¾	725 (800-1¾)
CIRCLING	2380-1	719 (800-1)	2460-2¼ 799 (800-2¼)	2460-2½ 799 (800-2½)
# JABVU FIX MINIMUMS				
S-LOC 13	2180-¾	525 (600-¾)	2180-1¼	525 (600-1¼)
CIRCLING	2200-1	539 (600-1)	2460-2¼ 799 (800-2¼)	2460-2½ 799 (800-2½)

REIL Rwy 3 and 21  
HIRL Rwy 3-21 and 13-31

FAF to MAP 5.6 NM

Knots	60	90	120	150	180
Min:Sec	5:36	3:44	2:48	2:14	1:52

NC-1, 14 MAY 2026 to 11 JUN 2026

NC-1, 14 MAY 2026 to 11 JUN 2026