

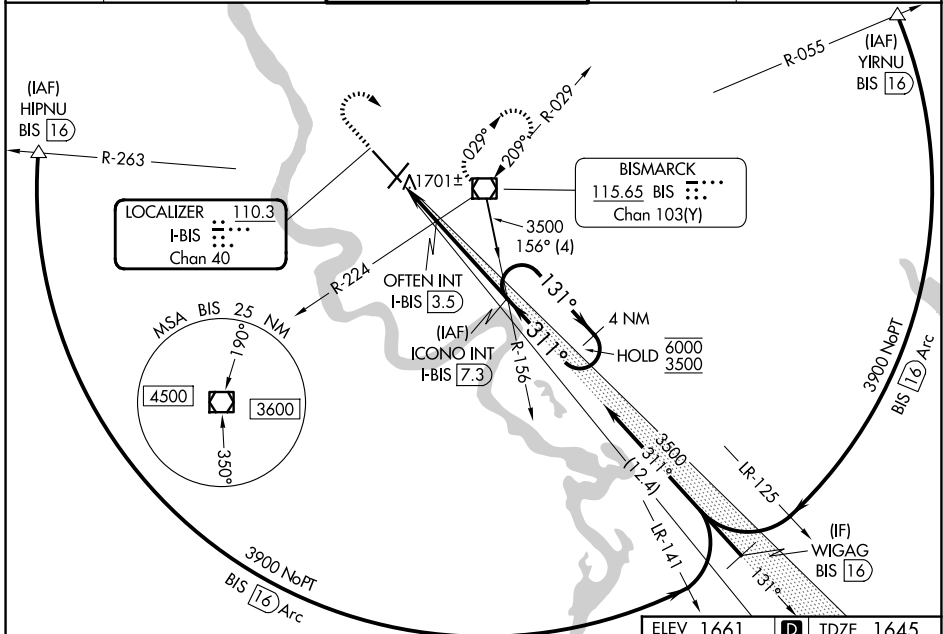
LOC/DME I-BIS <b>110.3</b> Chan 40	APP CRS <b>311°</b>	Rwy Ldg TDZE Apt Elev	<b>8794</b> <b>1645</b> <b>1661</b>
--	------------------------	-----------------------------	---

# ILS or LOC RWY 31

BISMARCK MUNI (BIS)

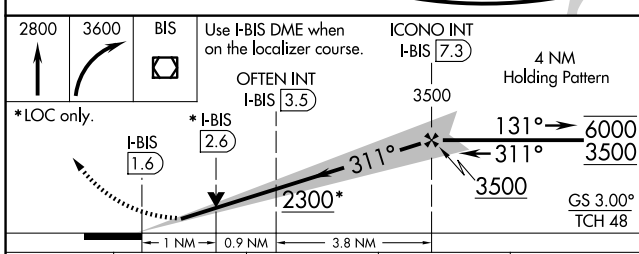
DME required for procedure entry.		MALSR	MISSED APPROACH: Climb to 2800 then climbing right turn to 3600 direct BIS VOR/DME and hold.
Autopilot coupled approach NA below 2680. For inop ALS, increase S-LOC 31 OFTEN FIX Cat C/D minimums visibility to RVR 5500.			

ATIS <b>119,35</b>	BISMARCK APP CON* <b>126.3 298.9</b>	BISMARCK TOWER* <b>118.3 (CTAF) 0 257.8</b>	GND CON <b>121.9</b>	UNICOM <b>122.95</b>
-----------------------	---	--	-------------------------	-------------------------



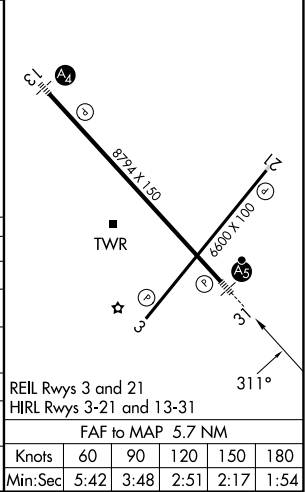
NC-1, 14 MAY 2026 to 11 JUN 2026

NC-1, 14 MAY 2026 to 11 JUN 2026



ELEV 1661	<b>D</b>	TDZE 1645
-----------	----------	-----------

CATEGORY	A	B	C	D
S-ILS 31	1845/24		200 (200-½)	
S-LOC 31	2300/24	655 (700-½)	2300-1¾	655 (700-1¾)
CIRCLING	2300-1	639 (700-1)	2460-2¼ 799 (800-2¼)	2460-2½ 799 (800-2½)
OFTEN FIX MINIMUMS (DUAL VOR RECEIVERS OR DME REQUIRED)				
S-LOC 31	2020/24	375 (400-½)	2020/35	375 (400-¾)
CIRCLING	2240-1	579 (600-1)	2460-2¼ 799 (800-2¼)	2460-2½ 799 (800-2½)



REIL Rwy 3 and 21 HIRL Rwy 3-21 and 13-31					
FAF to MAP 5.7 NM					
Knots	60	90	120	150	180
Min:Sec	5:42	3:48	2:51	2:17	1:54