

VOR/DME BIS 115.65 Chan 103(Y)	APP CRS 271°	Rwy Ldg TDZE Apt Elev N/A N/A 1661
--	------------------------	--

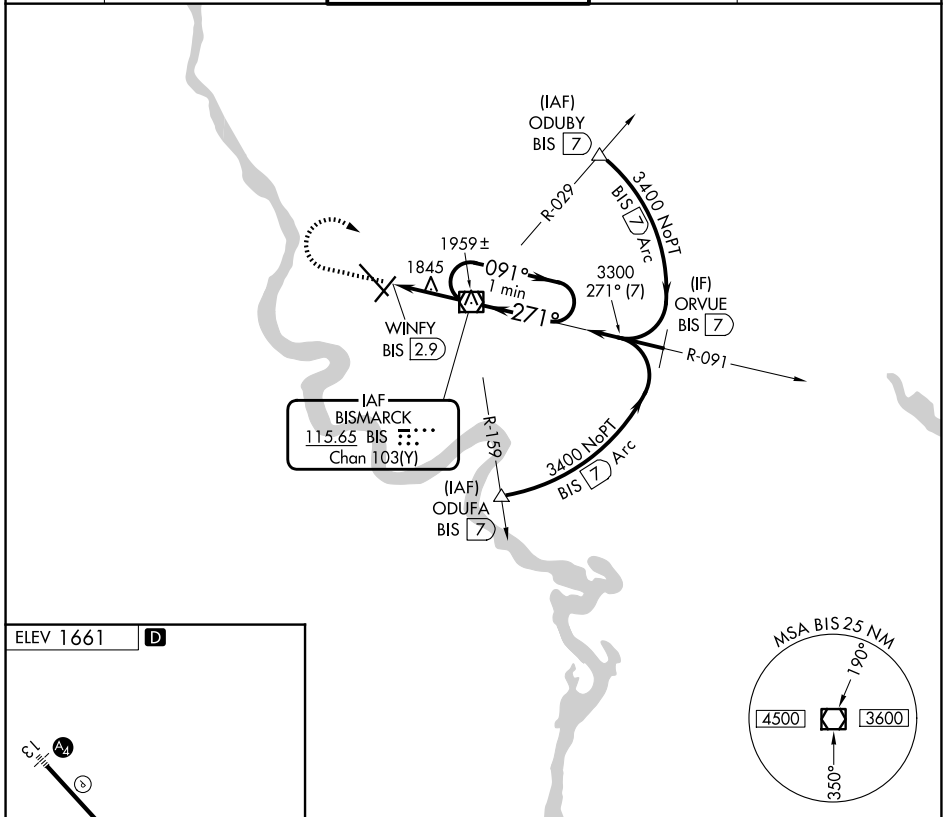
VOR-A

BISMARCK MUNI (BIS)

ASR

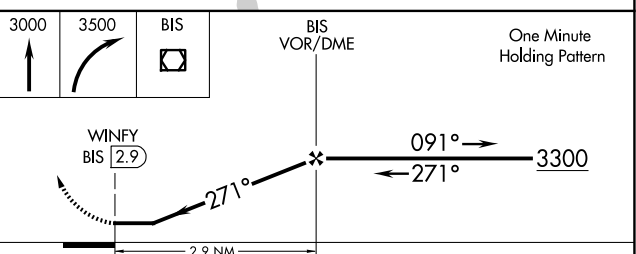
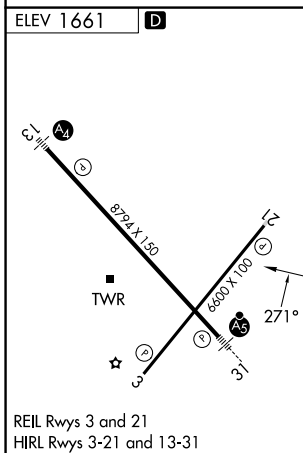
MISSED APPROACH: Climb to 3000 then climbing right turn to 3500 direct BIS VOR/DME and hold.

ATIS 119.35	BISMARCK APP CON * 126.3 298.9	BISMARCK TOWER * 118.3 (CTAF) 0 257.8	GND CON 121.9	UNICOM 122.95
-----------------------	--	---	-------------------------	-------------------------



NC-1, 14 MAY 2026 to 11 JUN 2026

NC-1, 14 MAY 2026 to 11 JUN 2026



FAF to MAP 2.9 NM						
Knots	60	90	120	150	180	
Min:Sec	2:54	1:56	1:27	1:10	0:58	
CATEGORY	A		B		C	D
CIRCLING	2200-1		539 (600-1)		2460-2¼ 799 (800-2¼)	2460-2½ 799 (800-2½)

BISMARCK, NORTH DAKOTA
Amdt 21A 23APR20

46°46'N-100°45'W

BISMARCK MUNI (BIS)
VOR-A