

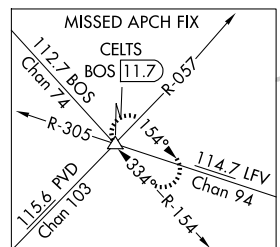
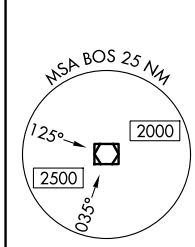
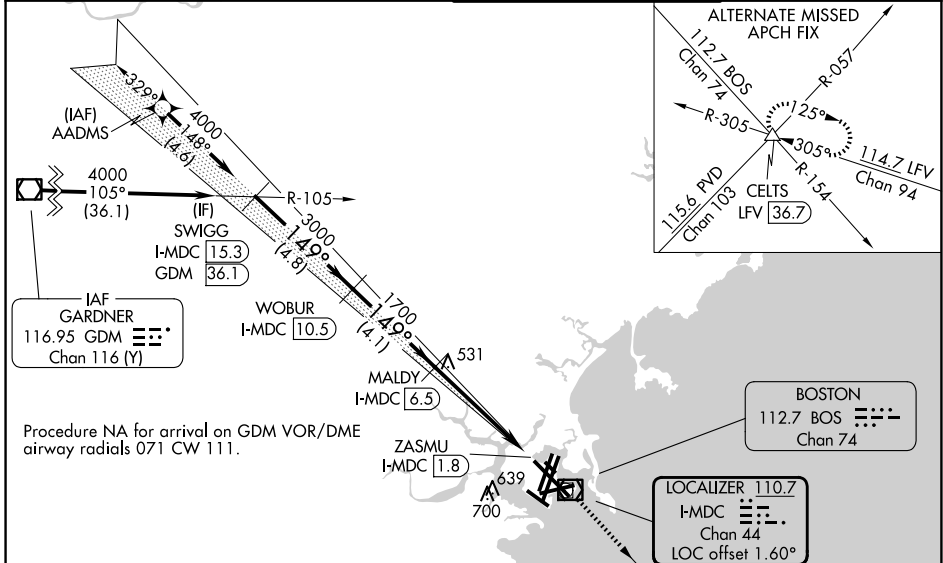
LOC/DME I-MDC	APP CRS	Rwy Ldg	9201
110.7	149°	TDZE	17
Chan 44		Apt Elev	19

ILS or LOC RWY 15R

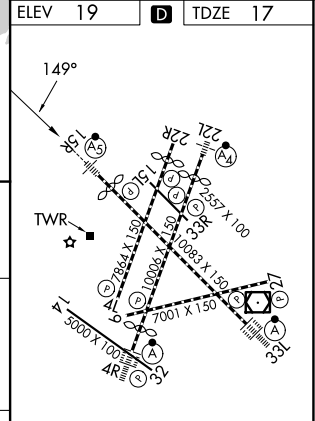
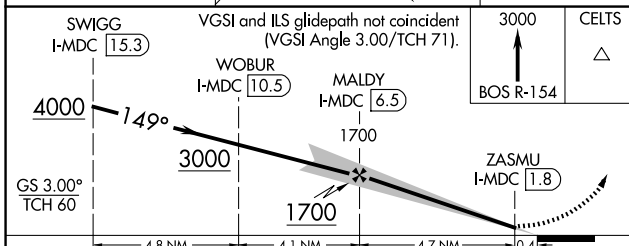
GENERAL EDWARD LAWRENCE LOGAN INTL (BOS)

RNP APCH - GPS. From AADMS.	MALSR	MISSED APPROACH: Climb to 3000 on BOS VOR/DME R-154 to CELTS INT/BOS 11.7 DME and hold.
DME required.		
For inop ALS, increase S-LOC 15R Cats C/D visibility to 1½ SM.		

D-ATIS 135.0	BOSTON APP CON 120.6 263.1	BOSTON TOWER 128.8 257.8 (WEST) 132.225 257.8 (EAST)	GND CON 121.75 121.9
------------------------	--------------------------------------	--	--------------------------------



LOCALIZER 110.7	I-MDC	Chan 44	LOC offset 1.60°
-----------------	-------	---------	------------------



CATEGORY	A	B	C	D
S-ILS 15R		267/24	250 (300-½)	
S-LOC 15R	580/24	563 (600-½)	580-1¼	563 (600-1¼)

NE-1, 14 MAY 2026 to 11 JUN 2026

NE-1, 14 MAY 2026 to 11 JUN 2026