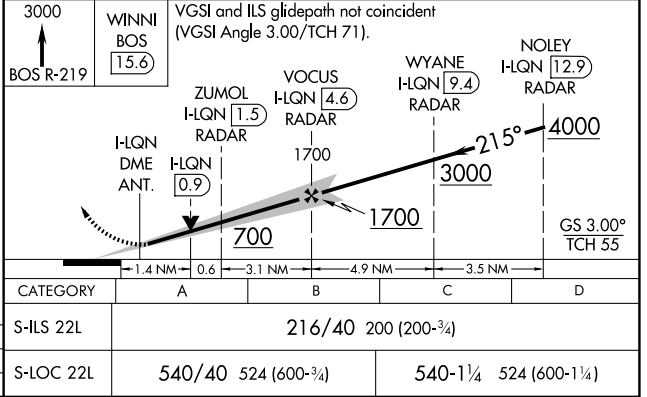
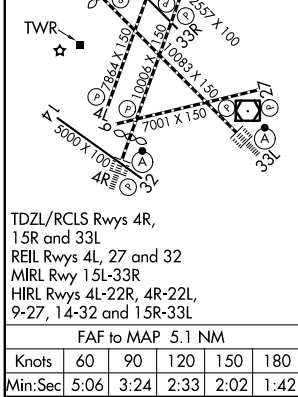
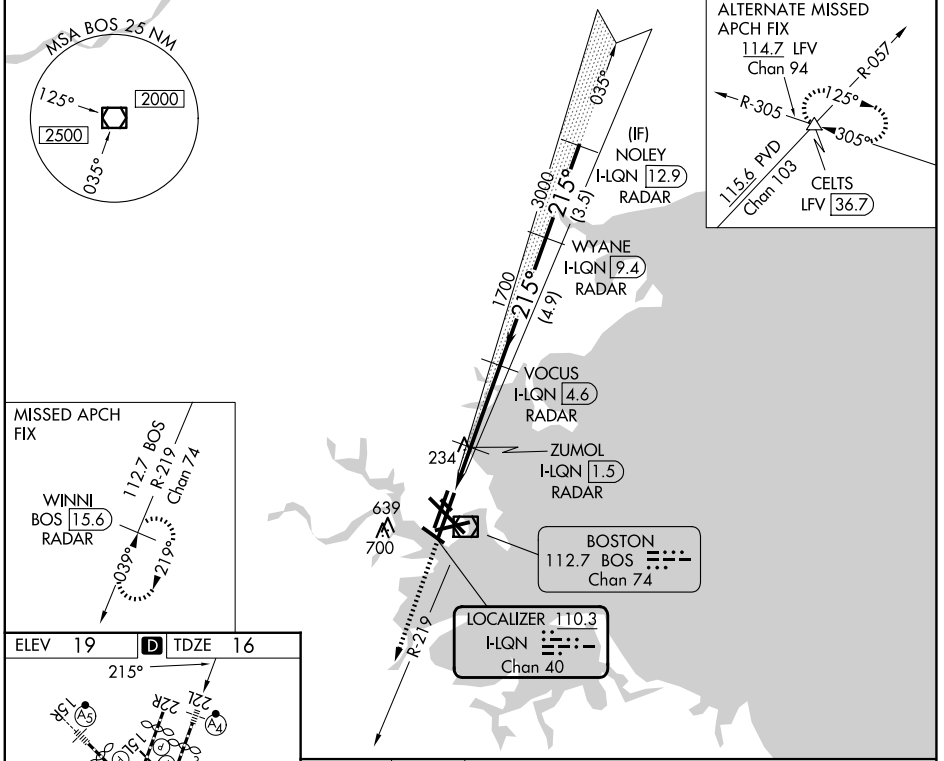


LOC/DME I-LQN <b>110.3</b> Chan <b>40</b>	APP CRS <b>215°</b>	Rwy Ldg <b>8806</b> TDZE <b>16</b> Apt Elev <b>19</b>
---	------------------------	---

# ILS or LOC RWY 22L

GENERAL EDWARD LAWRENCE LOGAN INTL (BOS)

RADAR required for procedure entry. DME or RADAR required. Inop table does not apply to S-ILS 22L.		MALSF 	MISSED APPROACH: Climb to 3000 on BOS VOR/DME R-219 to WINNI/BOS 15.6 DME/RADAR and hold.
D-ATIS <b>135.0</b>	BOSTON APP CON <b>120.6 263.1</b>	BOSTON TOWER <b>128.8 257.8 (WEST)</b> <b>132.225 257.8 (EAST)</b>	GND CON <b>121.75 121.9</b>



NE-1, 14 MAY 2026 to 11 JUN 2026

NE-1, 14 MAY 2026 to 11 JUN 2026