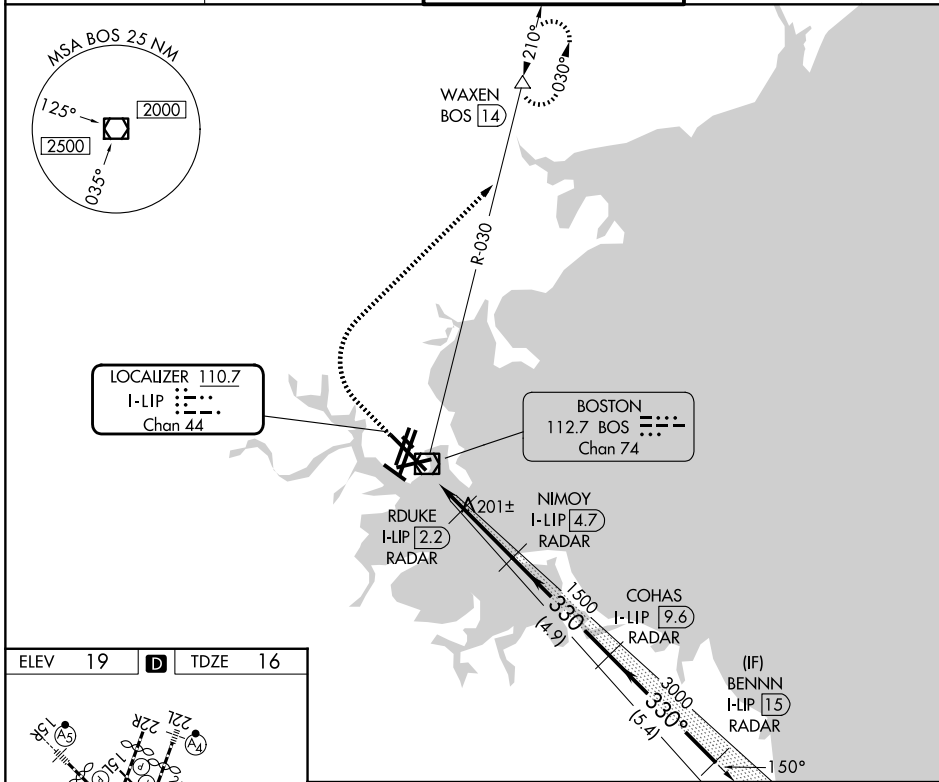


LOC/DME I-LIP	APP CRS	Rwy Ldg	<b>10083</b>
<b>110.7</b>	<b>330°</b>	TDZE	<b>16</b>
Chan <b>44</b>		Apt Elev	<b>19</b>

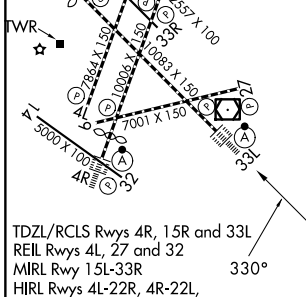
# ILS or LOC RWY 33L

GENERAL EDWARD LAWRENCE LOGAN INTL (BOS)

RADAR required for procedure entry. DME required.		ALSIF-2	MISSED APPROACH: Climb to 1500 then climbing right turn to 3000 on BOS VOR/DME R-030 to WAXEN/BOS 14 DME and hold.
D-ATIS	BOSTON APP CON	BOSTON TOWER	GND CON
<b>135.0</b>	<b>120.6 263.1</b>	<b>128.8 257.8 (WEST)</b> <b>132.225 257.8 (EAST)</b>	<b>121.75 121.9</b>



ELEV 19	<b>D</b>	TDZE 16
---------	----------	---------



TDZL/RCLS Rwws 4R, 15R and 33L  
REIL Rwws 4L, 27 and 32  
MIRL Rwy 15L-33R  
HIRL Rwws 4L-22R, 4R-22L, 9-27, 14-32 and 15R-33L

FAF to MAP 4.5 NM

Knots	60	90	120	150	180
Min:Sec	4:30	3:00	2:15	1:48	1:30

1500 3000 WAXEN BOS R-030

VGSI and ILS glidepath not coincident (VGSI Angle 3.00/TCH 68).

CATEGORY	A	B	C	D
S-ILS 33L	216/18 200 (200-½)			
S-LOC 33L	460/24	444 (500-½)	460/45	444 (500-¾)

NE-1, 14 MAY 2026 to 11 JUN 2026

NE-1, 14 MAY 2026 to 11 JUN 2026