

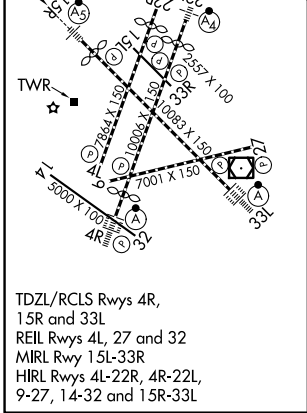
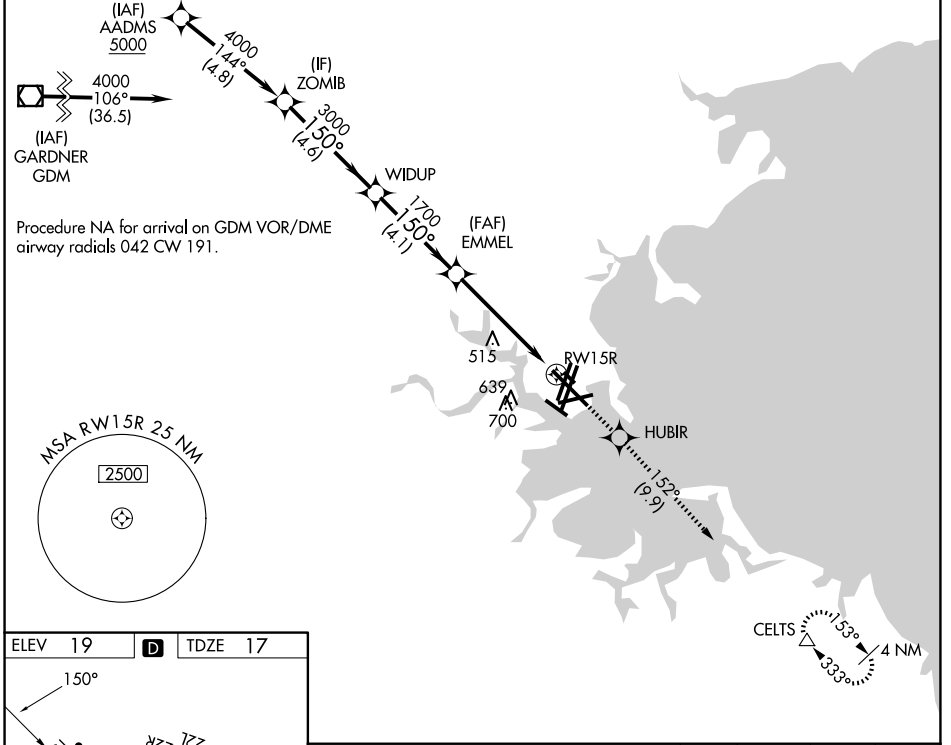
WAAS CH <b>42925</b> <b>W15A</b>	APP CRS <b>150°</b>	Rwy Ldg TDZE <b>17</b> Apt Elev <b>19</b>	<b>9201</b>
--	------------------------	---	-------------

# RNAV (GPS) RWY 15R

GENERAL EDWARD LAWRENCE LOGAN INTL (BOS)

RNP APCH - GPS.	MALSR	MISSED APPROACH: Climb to 3000 direct HUBIR and on track 152° to CELTS and hold.
⚠ For uncompensated Baro-VNAV systems, LNAV/VNAV NA below -15°C or above 54°C. For inop ALS, increase LNAV Cats C and D visibility to 1 3/8 SM.		

D-ATIS <b>135.0</b>	BOSTON APP CON <b>120.6 263.1</b>	BOSTON TOWER <b>128.8 257.8 (WEST)</b> <b>132.225 257.8 (EAST)</b>	GND CON <b>121.75 121.9</b>
------------------------	--------------------------------------	--	--------------------------------



VGSi and RNAV glidepath not coincident (VGSi Angle 3.00/TCH 71).		3000	HUBIR	tr 152°	CE LTS
ZOMB 4000 150° WIDUP 3000 EMMEL 1700 1.7 NM to RW15R RW15R		↑	✧	↙	△
GP 3.00° TCH 60		4.6 NM	4.1 NM	3.5 NM	1.7 NM
CATEGORY	A	B	C	D	
LPV DA		217/18	200 (200-1/2)		
LNAV/VNAV DA		567-1 1/8	550 (600-1 1/8)		
LNAV MDA	620/24	603 (700-1/2)	620-1 3/8	603 (700-1 3/8)	

NE-1, 14 MAY 2026 to 11 JUN 2026

NE-1, 14 MAY 2026 to 11 JUN 2026