

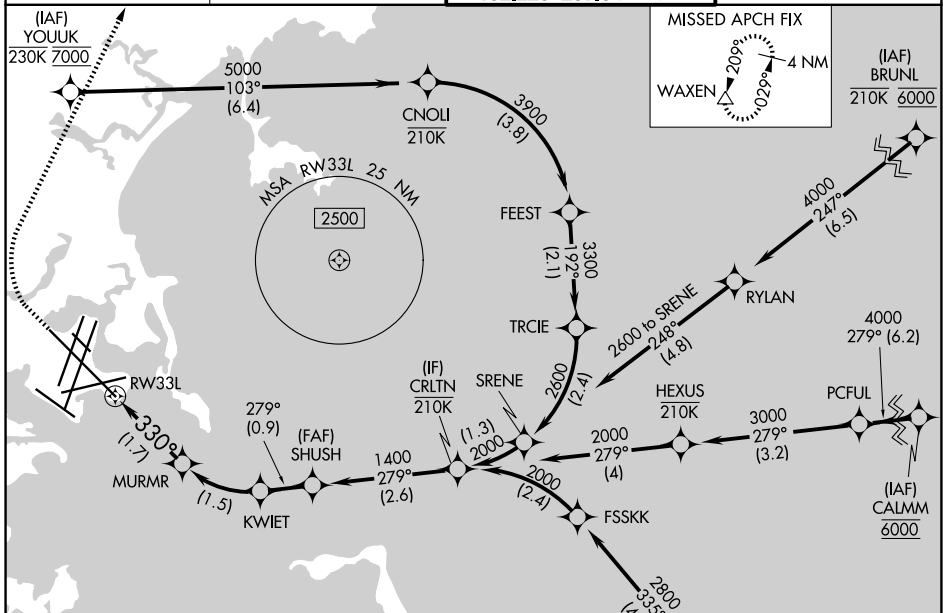
APP CRS	Rwy Ldg	<b>10083</b>
<b>330°</b>	TDZE	<b>16</b>
	Apt Elev	<b>19</b>

# RNAV (RNP) X RWY 33L

GENERAL EDWARD LAWRENCE LOGAN INTL (BOS)

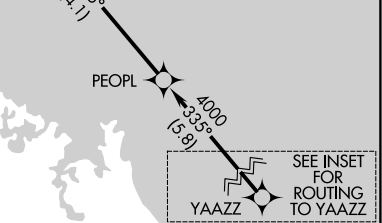
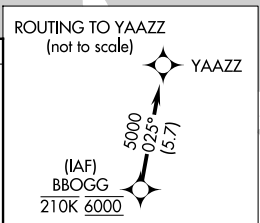
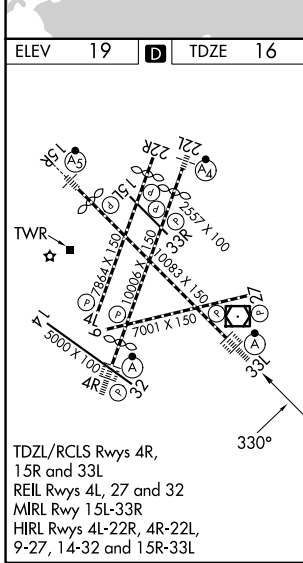
RNP AR APCH. RF required.	ALSF-2	MISSED APPROACH: Climb to 600 then climbing right turn to 3000 direct WAXEN and hold.
For uncompensated Baro-VNAV systems, procedure NA below -14°C or above 54°C. For inop ALS, increase RNP 0.30 all Cts visibility to RVR 4000.		

D-ATIS <b>135.0</b>	BOSTON APP CON <b>120.6 263.1</b>	BOSTON TOWER <b>128.8 257.8 (WEST)</b> <b>132.225 257.8 (EAST)</b>	GND CON <b>121.75 121.9</b>
------------------------	--------------------------------------	--	--------------------------------



NE-1, 14 MAY 2026 to 11 JUN 2026

NE-1, 14 MAY 2026 to 11 JUN 2026



VGSI and RNAV glidepath not coincident (VGSI Angle 3.00/TCH 68).			
CRLTN	SHUSH	KWJET	MURMR
2000	1400	1099	612
GP 3.00°	1400		330°
TCH 52			
	2.6 NM	0.9 NM	1.5 NM
1.7 NM			
WAXEN			
600	3000		
↑	↷		△
CATEGORY	A	B	C
RNP 0.30 DA	273/24		257 (300-½)
<b>AUTHORIZATION REQUIRED</b>			