

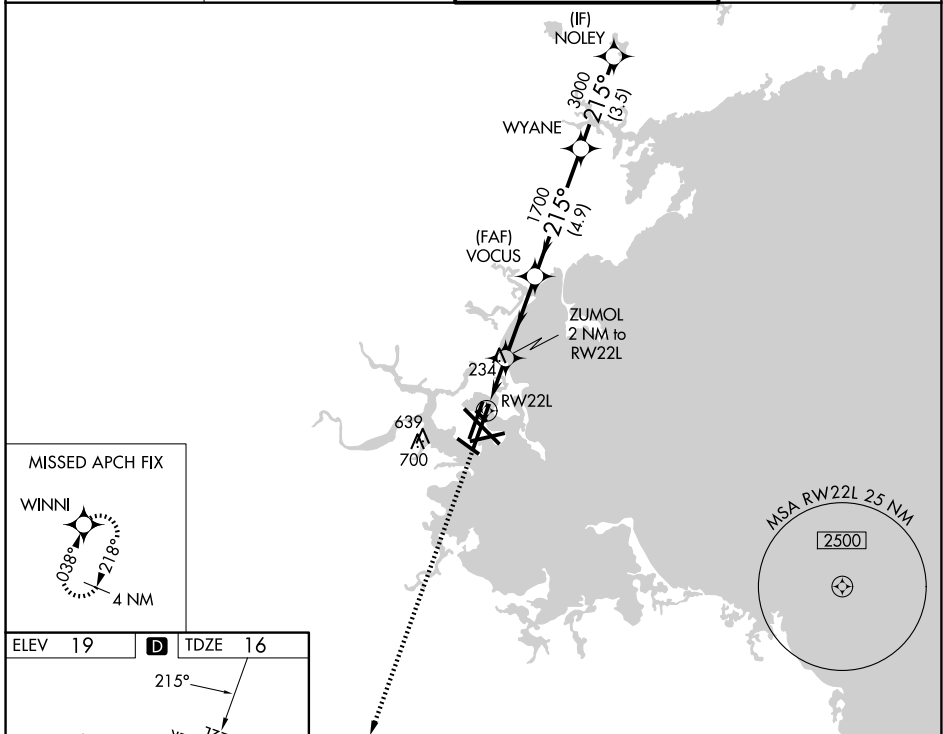
WAAS CH <b>45925</b> <b>W22A</b>	APP CRS <b>215°</b>	Rwy Ldg TDZE Apt Elev	<b>8806</b> <b>16</b> <b>19</b>
--	------------------------	-----------------------------	---------------------------------------

# RNAV (GPS) X RWY 22L

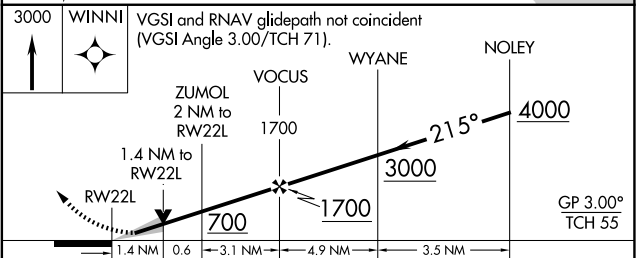
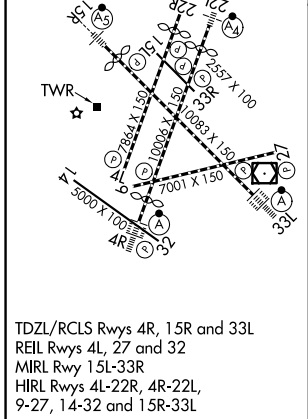
GENERAL EDWARD LAWRENCE LOGAN INTL (BOS)

RNP APCH - GPS.	MALSF	MISSED APPROACH: Climb to 3000 direct WINNI and hold.
▼ For inop ALS, increase LNAV/VNAV Cat D visibility to RVR 6000 and LNAV Cat D visibility to 1½ SM. For uncompensated Baro-VNAV systems, LNAV/VNAV NA below -13°C or above 43°C.		

D-ATIS <b>135.0</b>	BOSTON APP CON <b>120.6 263.1</b>	BOSTON TOWER <b>128.8 257.8 (WEST)</b> <b>132.225 257.8 (EAST)</b>	GND CON <b>121.75 121.9</b>
------------------------	--------------------------------------	--	--------------------------------



ELEV 19	<b>D</b>	TDZE 16
---------	----------	---------



CATEGORY	A	B	C	D
LPV DA	DA	216/40	200 (200-¾)	
LNAV/VNAV DA	DA	408/50	392 (400-1)	
LNAV MDA	540/40	524 (600-¾)	540-1¼	524 (600-1¼)