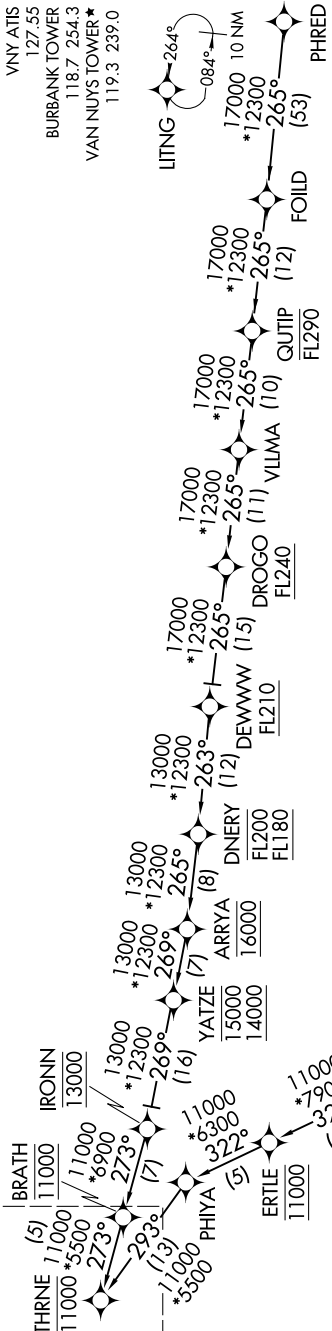


SW-3, 14 MAY 2026 to 11 JUN 2026

RNAV 1 - DME/DME/IRU or GPS.
RADAR required.

See following page for arrival routes.



NOTE: Jet and turboprop aircraft only.

NOTE: Expect local area altimeter setting reaching FL200.

NOTE: Chart not to scale.

AMMOR TRANSITION (AMMOR.THRNE4)
PHRED TRANSITION (PHRED.THRNE4)

(CONTINUED ON FOLLOWING PAGE)

SW-3, 14 MAY 2026 to 11 JUN 2026