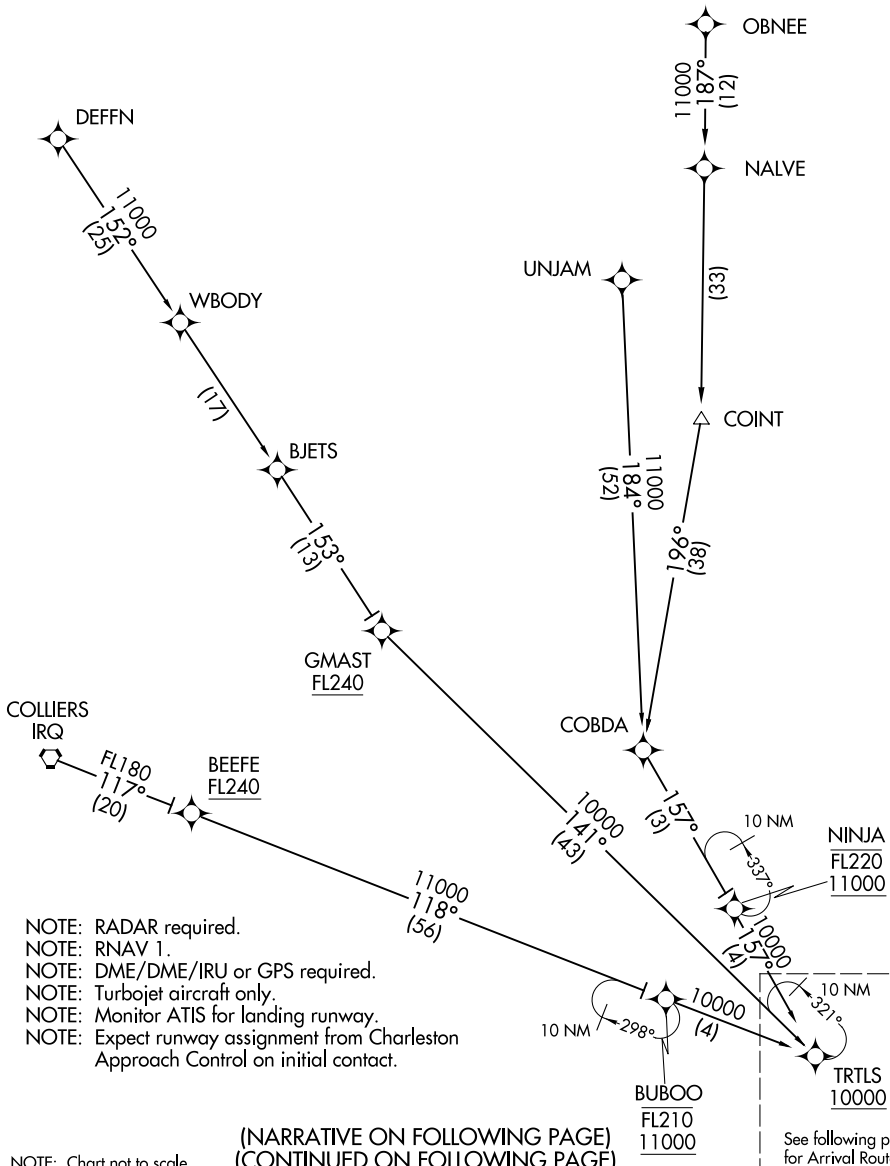


# OSPRI SEVEN ARRIVAL (RNAV) Transition Routes CHARLESTON, SOUTH CAROLINA

CHARLESTON APP CON  
 120.7 306.925  
 CHS D-ATIS  
 124.75  
 JZI AWOS-3  
 123.775

COLLIERS TRANSITION (IRQ.OSPRI7)  
DEFFN TRANSITION (DEFFN.OSPRI7)  
OBNEE TRANSITION (OBNEE.OSPRI7)  
UNJAM TRANSITION (UNJAM.OSPRI7)



SE-2, 14 MAY 2026 to 11 JUN 2026

SE-2, 14 MAY 2026 to 11 JUN 2026

- NOTE: RADAR required.
- NOTE: RNAV 1.
- NOTE: DME/DME/IRU or GPS required.
- NOTE: Turbojet aircraft only.
- NOTE: Monitor ATIS for landing runway.
- NOTE: Expect runway assignment from Charleston Approach Control on initial contact.

(NARRATIVE ON FOLLOWING PAGE)  
 (CONTINUED ON FOLLOWING PAGE)

NOTE: Chart not to scale.

See following page for Arrival Routes.

# OSPRI SEVEN ARRIVAL (RNAV) Transition Routes CHARLESTON, SOUTH CAROLINA