

LOC/DME I-HKH 111.5 Chan 52	APP CRS 047°	Rwy Ldg TDZE Apt Elev	5927 619 620
---	------------------------	-----------------------------	---

ILS or LOC RWY 4R

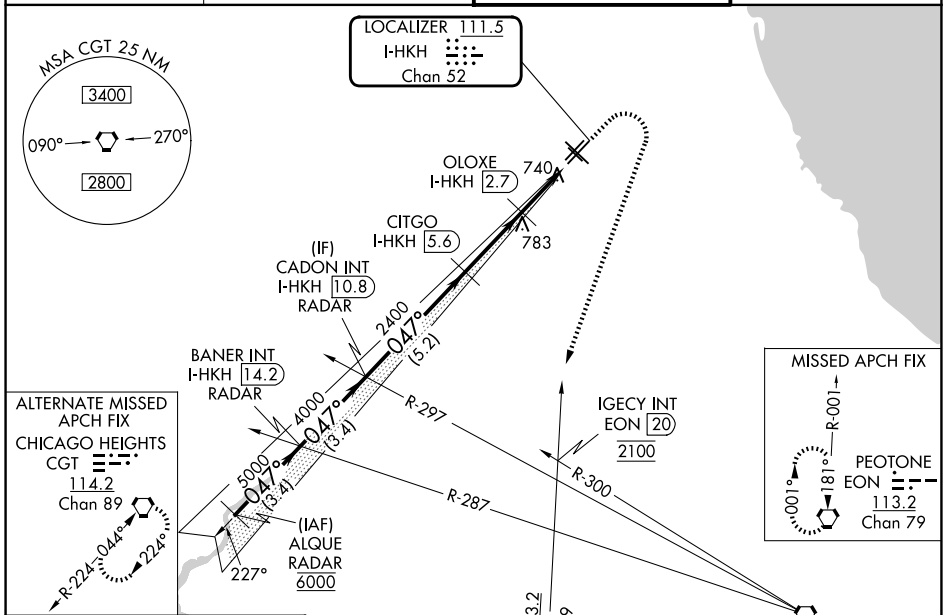
CHICAGO MIDWAY INTL (MDW)

DME required for LOC only.
RNP APCH - GPS or RADAR required for procedure entry.

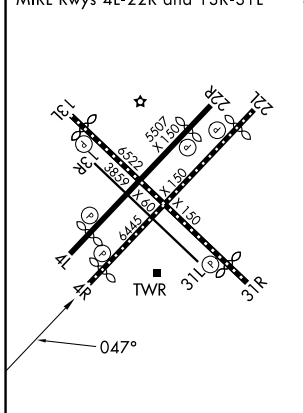
▼ Rwy 4R helicopter visibility reduction below RVR 4000 NA.

▲ MISSED APPROACH: Climb to 1100 then climbing right turn to 2100 on heading 230° and on EON VORTAC R-001 until crossing IGCEY INT/EON 20 DME then climb to 2600 to EON VORTAC and hold.

D-ATIS 132.75	CHICAGO APP CON 128.2 353.875	MIDWAY TOWER 135.2 269.125	GND CON 118.075
-------------------------	---	--------------------------------------	---------------------------



ELEV 620	D	TDZE 619
REIL Rws 4R, 22L and 31R		
RLS Rws 13L and 31R		
HIRL Rws 4R-22L and 13L-31R		
MIRL Rws 4L-22R and 13R-31L		



VGSI and ILS glidepath not coincident (VGSI Angle 3.00/TCH 66).			
ALQUE RADAR	BANER INT I-HKH (14.2) CADON INT I-HKH (10.8) RADAR	CITGO I-HKH (5.6) OLOXE I-HKH (2.7) I-HKH (1.2) I-HKH (0.2)	1100 2100 IGCEY INT 2600 EON
6000	5000	4000 2400 1460	↑ hdg 230° EON R-001 ↑
GS 3.00° TCH 50	3.4 NM	3.4 NM 5.2 NM 2.9 NM 1.5 NM 1 NM	
CATEGORY	A	B	C D
S-ILS 4R	869/40	250 (300-¾)	869/50 250 (300-1)
S-LOC 4R	1000/55	381 (400-1)	1000/60 381 (400-1¼)
CIRCLING	1120-1	500 (500-1)	1340-2 1340-2¼ 720 (800-2) 720 (800-2¼)

EC-3, 14 MAY 2026 to 11 JUN 2026

EC-3, 14 MAY 2026 to 11 JUN 2026