

WAAS CH 61147 W31A	APP CRS 318°	Rwy Ldg TDZE 613 Apt Elev 620
--	------------------------	---

RNAV (GPS) Z RWY 31R

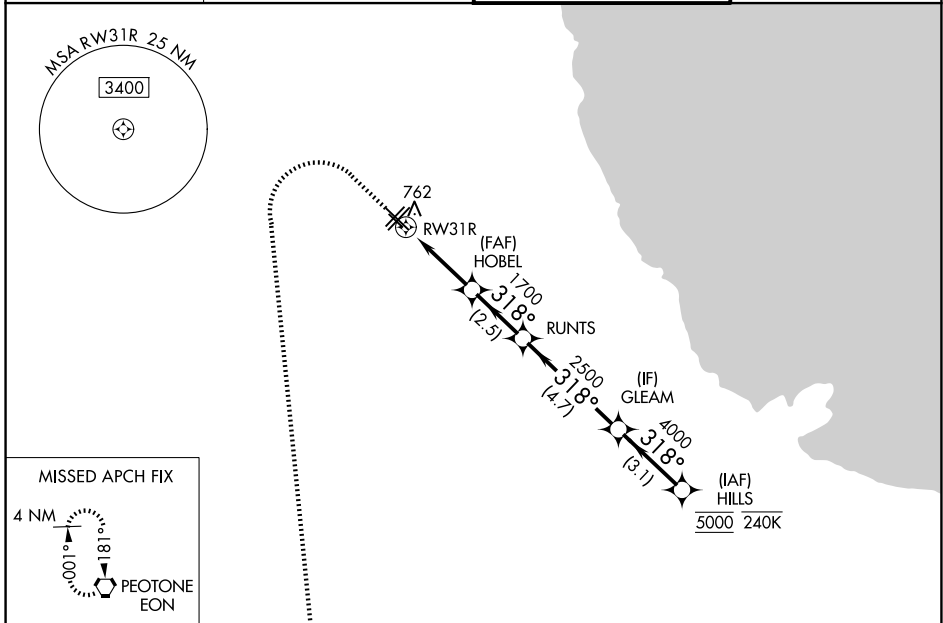
CHICAGO MIDWAY INTL (MDW)

RNP APCH - GPS.

▼ For uncompensated Baro-VNAV systems, LNAV/VNAV NA below -20°C or above 54°C.
 ▲ Rwy 31R helicopter visibility reduction below RVR 4000 NA.

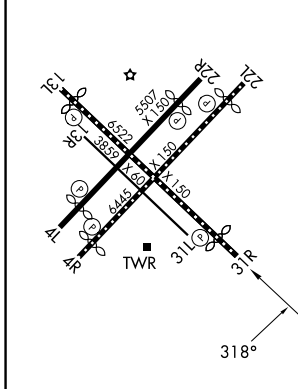
MISSED APPROACH: Climb to 1100 then climbing left turn to 2600 direct EON VORTAC and hold.

D-ATIS 132.75	CHICAGO APP CON 128.2 353.875	MIDWAY TOWER 135.2 269.125	GND CON 118.075
-------------------------	---	--------------------------------------	---------------------------



ELEV 620	D	TDZE 613
-----------------	----------	-----------------

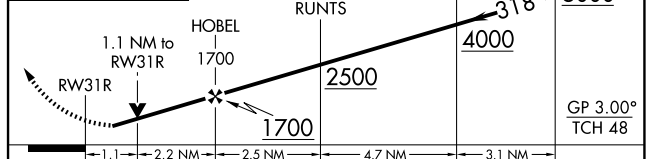
REIL Rwy 4R, 22L and 31R
 RLLS Rwy 13L and 31R
 HIRL Rwy 4R-22L and 13L-31R
 MIRL Rwy 4L-22R and 13R-31L



1100 2600 EON VGSI and RNAV glidepath not coincident (VGSI Angle 3.00/TCH 63).

HILLS 5000
 GLEM 4000
 RUNTS 2500
 HOBEL 1700
 RWY 31R 620

GP 3.00° TCH 48



CATEGORY	A	B	C	D
LPV DA	863/40		250 (300-¾)	
LNAV/VNAV DA	953/50		340 (400-1)	
LNAV MDA	1020/55 407 (400-1)		1020/60 407 (400-1¼)	
CIRCLING	1120-1 500 (500-1)		1340-2 720 (800-2) 1340-2¼ 720 (800-2¼)	

EC-3, 14 MAY 2026 to 11 JUN 2026

EC-3, 14 MAY 2026 to 11 JUN 2026