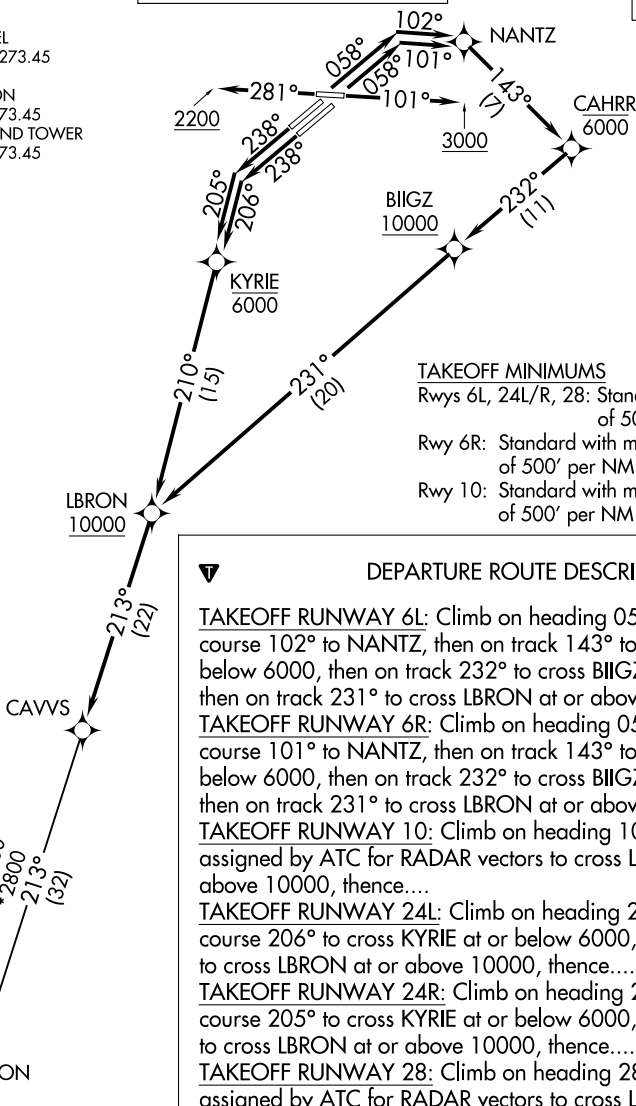


CAVVS FIVE DEPARTURE (RNAV)

CLEVELAND DEP CON
135.875 346.325
D-ATIS
132.375
CLNC DEL
125.05 273.45
CPDC
GND CON
121.7 273.45
CLEVELAND TOWER
124.5 273.45

RNAV 1 - DME/DME/IRU or GPS.
RADAR required.

**TOP ALTITUDE:
14000**



TAKEOFF MINIMUMS

- Rwys 6L, 24L/R, 28: Standard with minimum climb of 500' per NM to 1300.
- Rwy 6R: Standard with minimum climb of 500' per NM to 1400.
- Rwy 10: Standard with minimum climb of 500' per NM to 1600.

DEPARTURE ROUTE DESCRIPTION

TAKEOFF RUNWAY 6L: Climb on heading 058° to intercept course 102° to NANTZ, then on track 143° to cross CAHRR at or below 6000, then on track 232° to cross BIIGZ at or above 10000, then on track 231° to cross LBRON at or above 10000, thence....

TAKEOFF RUNWAY 6R: Climb on heading 058° to intercept course 101° to NANTZ, then on track 143° to cross CAHRR at or below 6000, then on track 232° to cross BIIGZ at or above 10000, then on track 231° to cross LBRON at or above 10000, thence....

TAKEOFF RUNWAY 10: Climb on heading 101° to 3000, then as assigned by ATC for RADAR vectors to cross LBRON at or above 10000, thence....

TAKEOFF RUNWAY 24L: Climb on heading 238° to intercept course 206° to cross KYRIE at or below 6000, then on track 210° to cross LBRON at or above 10000, thence....

TAKEOFF RUNWAY 24R: Climb on heading 238° to intercept course 205° to cross KYRIE at or below 6000, then on track 210° to cross LBRON at or above 10000, thence....

TAKEOFF RUNWAY 28: Climb on heading 281° to 2200, then as assigned by ATC for RADAR vectors to cross LBRON at or above 10000, thence....

....on track 213° to CAVVS, then on (transition). Maintain 14000, expect filed altitude ten minutes after departure.

APPLETON TRANSITION (CAVVS5.APE)

NOTE: Chart not to scale.

CAVVS FIVE DEPARTURE (RNAV)

EC-2, 14 MAY 2026 to 11 JUN 2026

EC-2, 14 MAY 2026 to 11 JUN 2026