

| | | | |
|--------------------------------|------------------------|-----------------------------|---|
| LOC/DME I-PVY 111.55 | APP CRS 238° | Rwy Ldg TDZE Apt Elev | 9000 780 799 |
| Chan 52(Y) | | | |

ILS RWY 24R (SA CAT I)

CLEVELAND-HOPKINS INTL (CLE)

DME required. Aircraft not DME/DME/IRU or GPS equipped - RADAR required for procedure entry. RNAV 1. From LLROY and BUDRW: RNAV 1-DME/DME/IRU or GPS required for procedure entry.

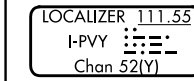
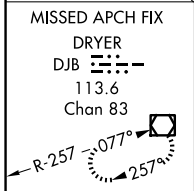
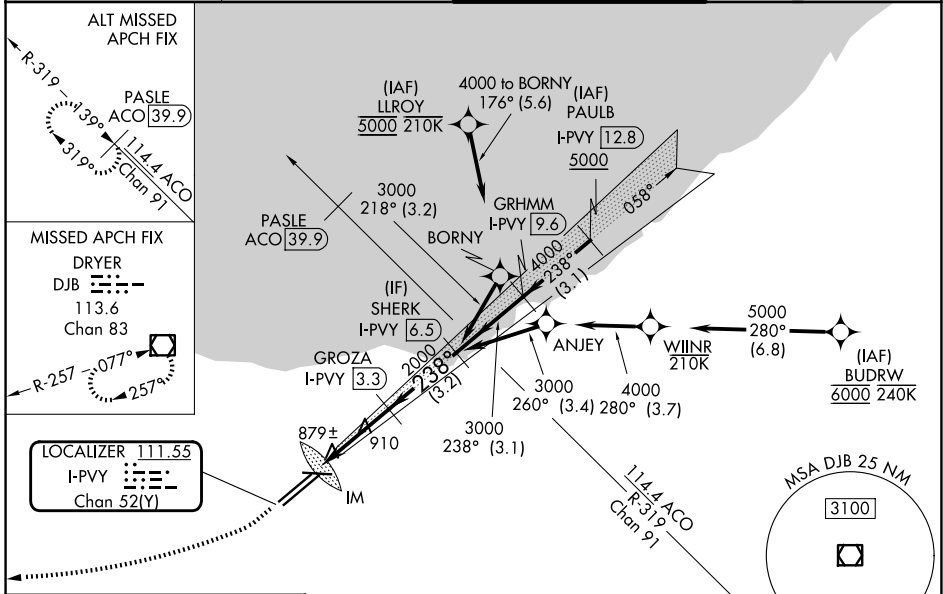
Requires specific OPSPEC, MSPEC, or LOA approval and use of HUD to DH. Simultaneous approach authorized. Simultaneous operations require use of vertical guidance; maintain last assigned altitude until established on glideslope.

ALSF-2

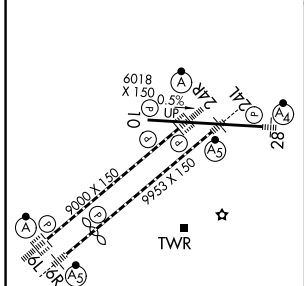


MISSED APPROACH: Climb to 1700 then climbing right turn to 3000 direct DJB VOR/DME and hold.

| | | | |
|-------------------------|--|--|--------------------------------|
| D-ATIS 127.85 | CLEVELAND APP CON 126.55 346.325 | CLEVELAND TOWER 124.5 273.45 | GND CON 121.7 273.45 |
|-------------------------|--|--|--------------------------------|



| | | |
|----------|----------|----------|
| ELEV 799 | D | TDZE 780 |
|----------|----------|----------|



| | | | | |
|-----------|----------------------|---|---|---|
| CATEGORY | A | B | C | D |
| S-ILS 24R | RA 150/14 150 DA 930 | | | |

REIL Rwy 10
TDZ/CL Rwy 6L, 6R, 24L and 24R
HIRL Rwy 6L-24R, 6R-24L and 10-28

VGSJ and ILS glidepath not coincident (VGSJ Angle 3.00/TCH 65).

SHERK I-PVY 6.5

GROZA I-PVY 3.3

IM

2000

2000

3000

GS 3.00°
TCH 55

SA CATEGORY I ILS - SPECIAL AIRCREW & AIRCRAFT CERTIFICATION REQUIRED