

LOC/DME I-LIZ <b>111.55</b> Chan <b>52(Y)</b>	APP CRS <b>058°</b>	Rwy Ldg <b>9000</b> TDZE <b>773</b> Apt Elev <b>799</b>
---	------------------------	---

# ILS RWY 6L (CAT II & III)

CLEVELAND-HOPKINS INTL (CLE)

From GROHL, HICKR, and KWENE: RNAV 1-DME/DME/IRU or GPS required for procedure entry. Aircraft not DME/DME/IRU or GPS equipped - RADAR required for procedure entry. RNAV 1.

ALSF-2



MISSED APPROACH: Climb to 1800 then climbing left turn to 3000 on heading 350° and DJB VOR/DME R-054 to PASLE/DJB 20 DME and hold.

DME required.

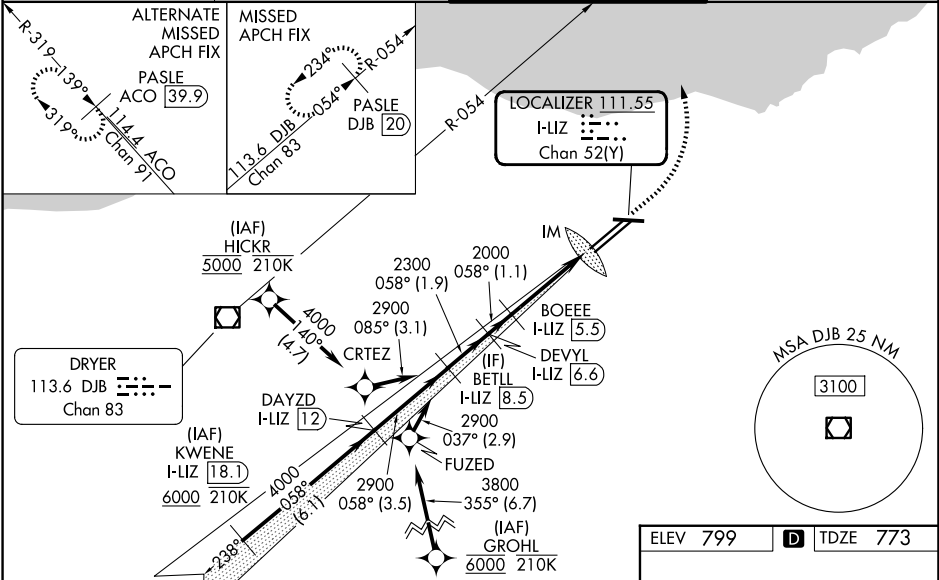
**T** Simultaneous approach authorized.  
Simultaneous operations require use of vertical guidance; maintain last assigned altitude until established on glideslope.

D-ATIS  
**127.85**

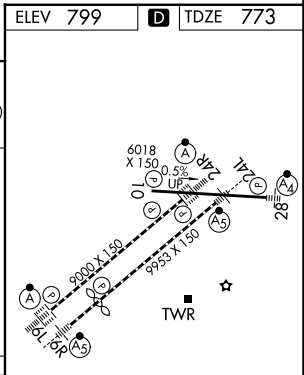
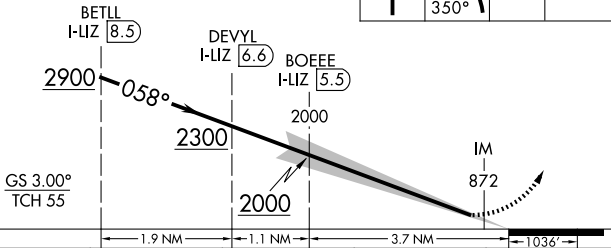
CLEVELAND APP CON  
**126.55 346.325**

CLEVELAND TOWER  
**124.5 273.45**

GND CON  
**121.7 273.45**



VGSI and ILS glidepath not coincident (VGSI Angle 3.00/TCH 69).



CATEGORY	A	B	C	D
S-ILS 6L	CAT II RA 111/12 100 DA 873			
S-ILS 6L	CAT III RVR 06			

## CATEGORY II & III ILS - SPECIAL AIRCREW & AIRCRAFT CERTIFICATION REQUIRED

REIL Rwy 10  
TDZ/CL Rwy 6L, 6R, 24L, and 24R  
HIRL Rwy 6L-24R, 6R-24L and 10-28