

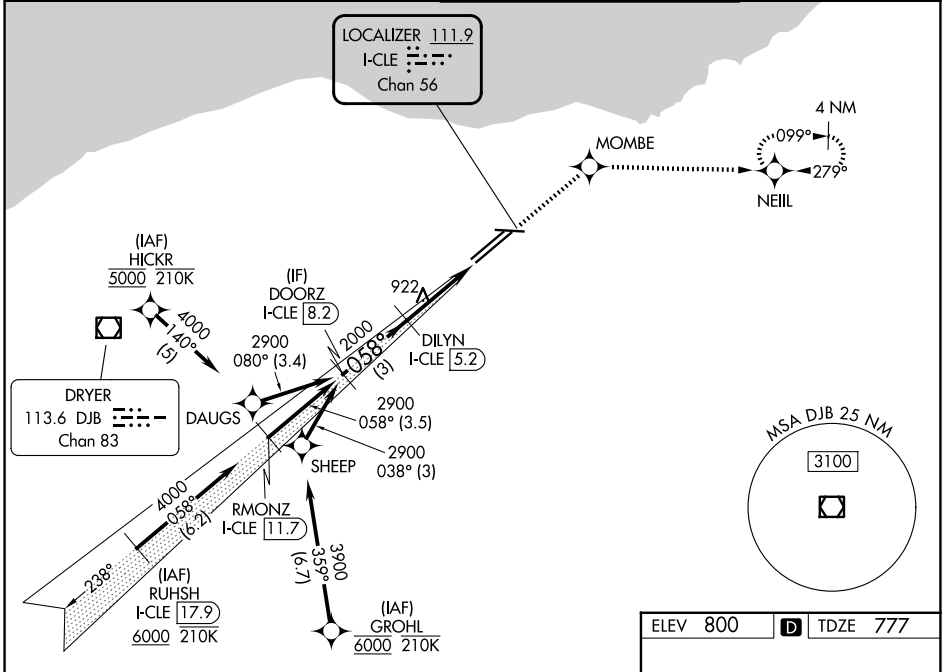
|   |                        |   |
|---|------------------------|---|
| LOC/DME I-CLE<br><b>111.9</b><br>Chan <b>56</b> | APP CRS<br><b>058°</b> | Rwy Ldg <b>8029</b><br>TDZE <b>777</b><br>Apt Elev <b>800</b> |
|---|------------------------|---|

# ILS RWY 6R (SA CAT II)

CLEVELAND-HOPKINS INTL (CLE)

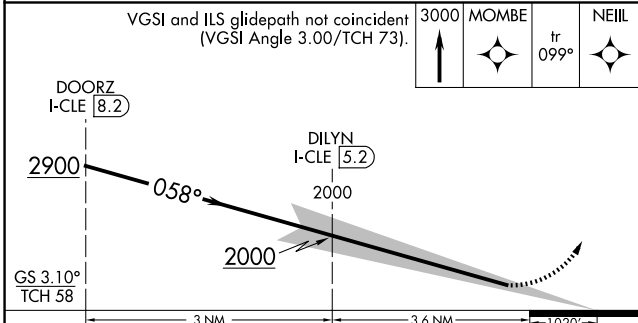
|   |           |   |
|---|-----------|---|
| RNP APCH - GPS.   | MALSR<br> | MISSED APPROACH:<br>Climb to 3000 direct<br>MOMBE and on track<br>099° to NEILL and hold. |
| <p>Simultaneous approach authorized. Simultaneous operations require use of vertical guidance; maintain last assigned altitude until established on glideslope. Requires specific OPSPEC, MSPEC, or LOA approval.</p> |           |   |

|                         |  |  |                                |
|-------------------------|--|--|--------------------------------|
| D-ATIS<br><b>127.85</b> | CLEVELAND APP CON<br><b>126.55 346.325</b> | CLEVELAND TOWER<br><b>124.5 273.45</b> | GND CON<br><b>121.7 273.45</b> |
|-------------------------|--|--|--------------------------------|

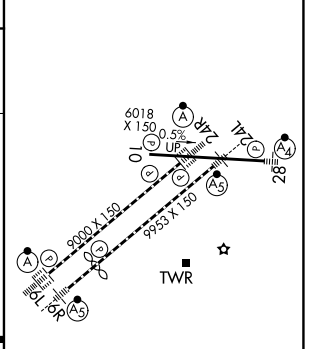


EC-2, 14 MAY 2026 to 11 JUN 2026

EC-2, 14 MAY 2026 to 11 JUN 2026



|          |                   |
|----------|-------------------|
| ELEV 800 | <b>D</b> TDZE 777 |
|----------|-------------------|



|          |                      |   |   |   |
|----------|----------------------|---|---|---|
| CATEGORY | A                    | B | C | D |
| S-ILS 6R | RA 100/12 100 DA 877 |   |   |   |

**SA CATEGORY II ILS - SPECIAL AIRCREW & AIRCRAFT CERTIFICATION REQUIRED**

REIL Rwy 10  
TDZ/CL Rwy 6L, 6R, 24L and 24R  
HIRL Rwy 6L-24R, 6R-24L and 10-28