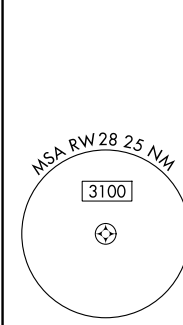
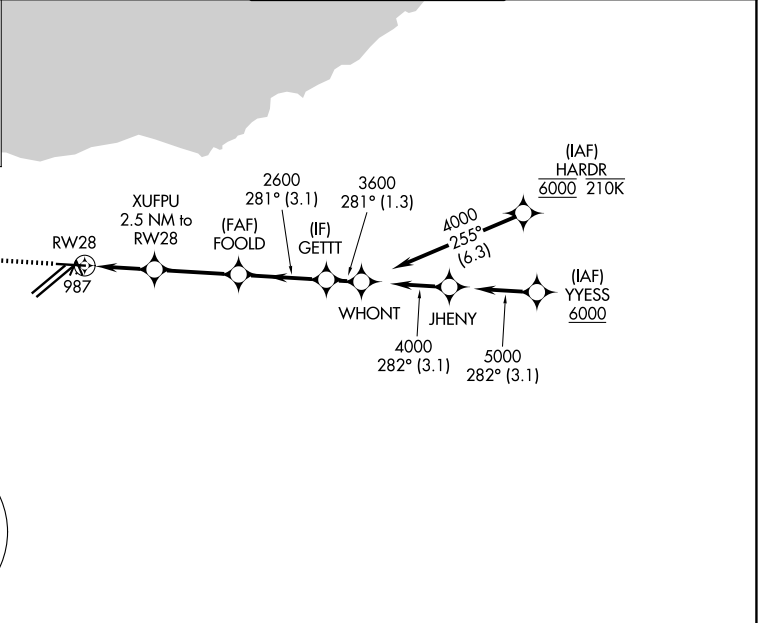
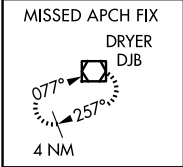


WAAS CH <b>40109</b> <b>W28A</b>	APP CRS <b>281°</b>	Rwy Ldg <b>6018</b> TDZE <b>799</b> Apt Elev <b>799</b>
--	------------------------	---

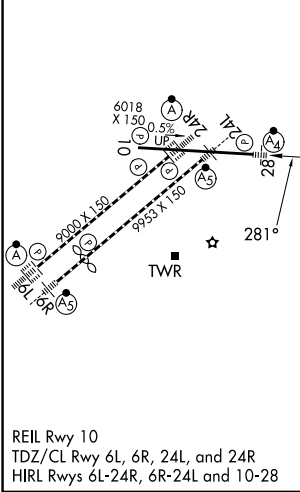
# RNAV (GPS) RWY 28

CLEVELAND-HOPKINS INTL (CLE)

<b>RNP APCH.</b> ▼ For uncompensated Baro-VNAV systems, LNAV/VNAV NA below -18°C (0°F) or above 54°C (130°F). Circling Rwy 10 NA at night. Inop table does not apply to LPV.		<b>MALSF</b> 	<b>MISSED APPROACH:</b> Climb to 1400 then climbing left turn to 3000 direct DJB VOR/DME and hold.
<b>D-ATIS</b> <b>127.85</b>	<b>CLEVELAND APP CON</b> <b>126.55 346.325</b>	<b>CLEVELAND TOWER</b> <b>124.5 273.45</b>	<b>GND CON</b> <b>121.7 273.45</b>



ELEV 799	<b>D</b>	TDZE 799
----------	----------	----------



1400	3000	DJB		
*LNAV only.				
	XUFPU 2.5 NM to RWY 28	FOOLD 2600	GETT 3600	GP 3.00° TCH 46
	RWY 28	*1.3 NM to RWY 28	*1640	
	1.3 NM	1.2 NM	3 NM	3.1 NM
CATEGORY	A	B	C	D
LPV DA		999/40	200 (200-¾)	
LNAV/VNAV DA		1168/40	369 (400-¾)	
LNAV MDA	1260/40	461 (500-¾)	1260/60	461 (500-1¼)
CIRCLING	1420-1	621 (700-1)	1420-1¾ 621 (700-1¾)	1420-2 621 (700-2)

EC-2, 14 MAY 2026 to 11 JUN 2026

EC-2, 14 MAY 2026 to 11 JUN 2026