

# RNAV (RNP) Z RWY 24L


CLEVELAND-HOPKINS INTL (CLE)

APP CRS <b>238°</b>	Rwy Ldg TDZE Apt Elev	<b>9953</b> <b>786</b> <b>799</b>
------------------------	-----------------------------	---

RNP AR APCH.

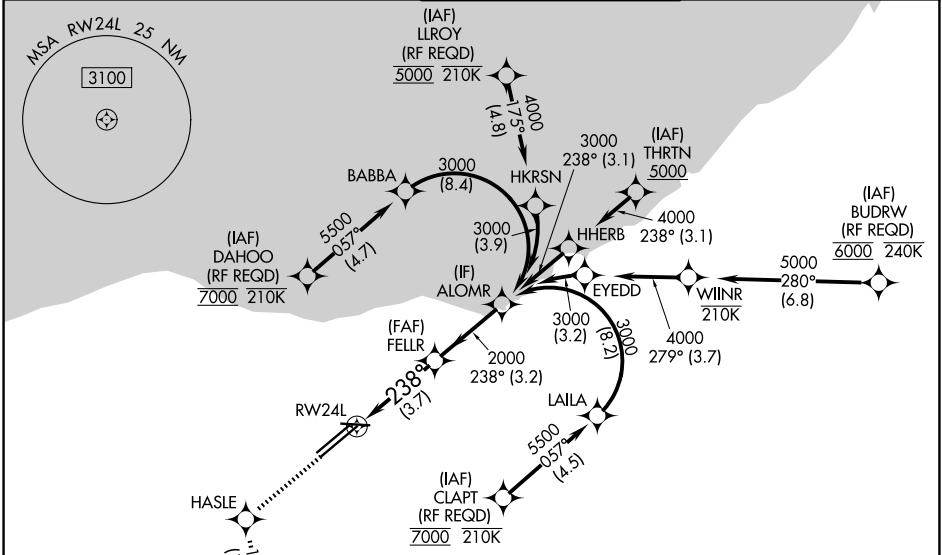
▼ For uncompensated Baro-VNAV systems, procedure NA below -18°C (0°F) or above 54°C (130°F). For inop ALS, increase RNP 0.19 all Cats visibility to RVR 5500.

MALSR



MISSED APPROACH: Climb to 3000 direct HASLE and on track 177° to SAROW and hold.

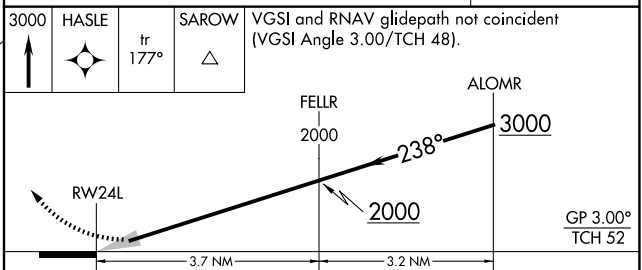
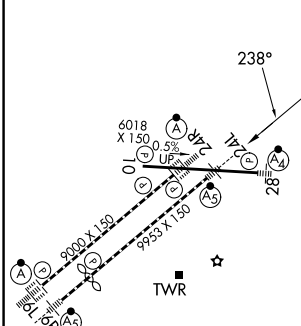
D-ATIS <b>127.85</b>	CLEVELAND APP CON <b>126.55 346.325</b>	CLEVELAND TOWER <b>124.5 273.45</b>	GND CON <b>121.7 273.45</b>
-------------------------	--	--	--------------------------------



EC-2, 14 MAY 2026 to 11 JUN 2026

EC-2, 14 MAY 2026 to 11 JUN 2026

ELEV 799	<b>D</b>	TDZE 786
----------	----------	----------



CATEGORY	A	B	C	D
RNP 0.19 DA		1140/30	354 (400- $\frac{5}{8}$ )	
RNP 0.30 DA		1243/45	457 (500- $\frac{7}{8}$ )	

REIL Rwy 10  
TDZ/CL Rwy 6L, 6R, 24L and 24R  
HIRL Rwsy 6L-24R, 6R-24L and 10-28

## AUTHORIZATION REQUIRED