

RNAV (RNP) Z RWY 24R

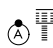
CLEVELAND-HOPKINS INTL (CLE)

APP CRS 238°	Rwy Ldg TDZE Apt Elev	9000 780 799
------------------------	-----------------------------	---

RNP AR APCH.

▼ For uncompensated Baro-VNAV systems, procedure NA below -18°C (0°F) or above 54°C (130°F). For inop ALS, increase RNP 0.13 all Cats visibility to RVR 4500.

ALSF-2



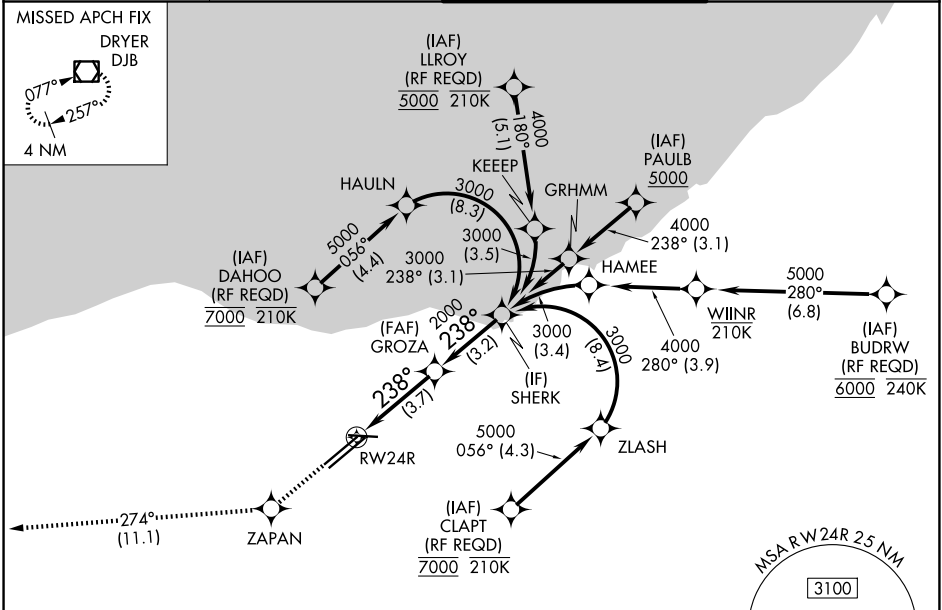
MISSED APPROACH: Climb to 3000 direct ZAPAN and on track 274° to DJB VOR/DME and hold.

D-ATIS 127.85	CLEVELAND APP CON 126.55 346.325	CLEVELAND TOWER 124.5 273.45	GND CON 121.7 273.45
-------------------------	--	--	--------------------------------

MISSED APCH FIX
DRYER
DJB



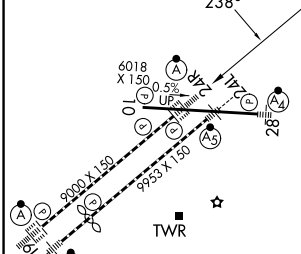
4 NM



EC-2, 14 MAY 2026 to 11 JUN 2026

EC-2, 14 MAY 2026 to 11 JUN 2026

ELEV 799	D	TDZE 780
----------	----------	----------



3000 ZAPAN tr 274° DJB

VGSI and RNAV glidepath not coincident (VGSI Angle 3.00/TCH 65).

SHERK

GROZA 2000

RWY 24R 3000

238°

2000

GP 3.00° TCH 55

3.7 NM 3.2 NM

CATEGORY	A	B	C	D
RNP 0.13 DA		1064/24	284 (300-½)	
RNP 0.30 DA		1176/35	396 (400-¾)	

REIL Rwy 10
TDZ/CL Rwy 6L, 6R, 24L and 24R
HIRL Rwy 6R-24L, and 6L-24R, 10-28

AUTHORIZATION REQUIRED