

RNAV (RNP) Z RWY 6L

CLEVELAND-HOPKINS INTL (CLE)

APP CRS 058°	Rwy Ldg 9000
	TDZE 773
	Apt Elev 799

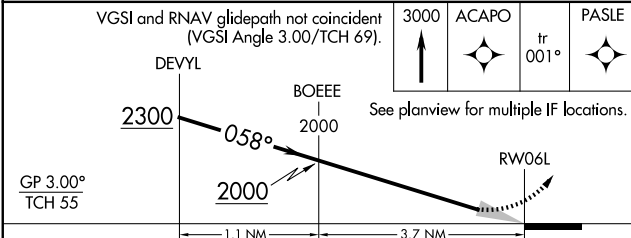
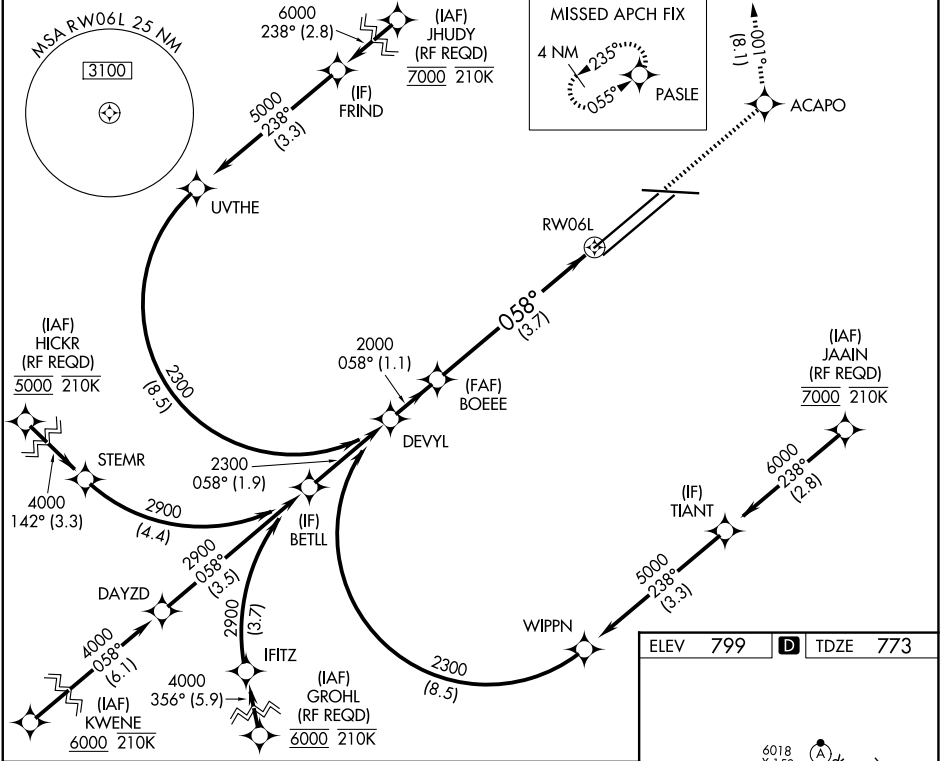
RNP AR APCH.

▼ For uncompensated Baro-VNAV systems, procedure NA below -18°C (0°F) or above 54°C (130°F). For inop ALS, increase RNP 0.17 all Cats visibility to RVR 5500 and RNP 0.30 all Cats visibility to RVR 6000.

ALSF-2

MISSED APPROACH: Climb to 3000 direct ACAPO and on track 001° to PASLE and hold.

D-ATIS 127.85	CLEVELAND APP CON 126.55 346.325	CLEVELAND TOWER 124.5 273.45	GND CON 121.7 273.45
-------------------------	--	--	--------------------------------



ELEV 799	D TDZE 773
----------	-------------------

6018 X 150

9900 X 150

9933 X 150

287° (2)

058°

TWR

REIL Rwy 10

TDZ/CL Rwy 6L, 6R, 24L, and 24R

HIRL Rwy 6L-24R, 6R-24L and 10-28

CATEGORY	A	B	C	D
RNP 0.17 DA		1123/30	350 (400-5/8)	
RNP 0.30 DA		1176/40	403 (400-3/4)	

AUTHORIZATION REQUIRED

EC-2, 14 MAY 2026 to 11 JUN 2026

EC-2, 14 MAY 2026 to 11 JUN 2026