

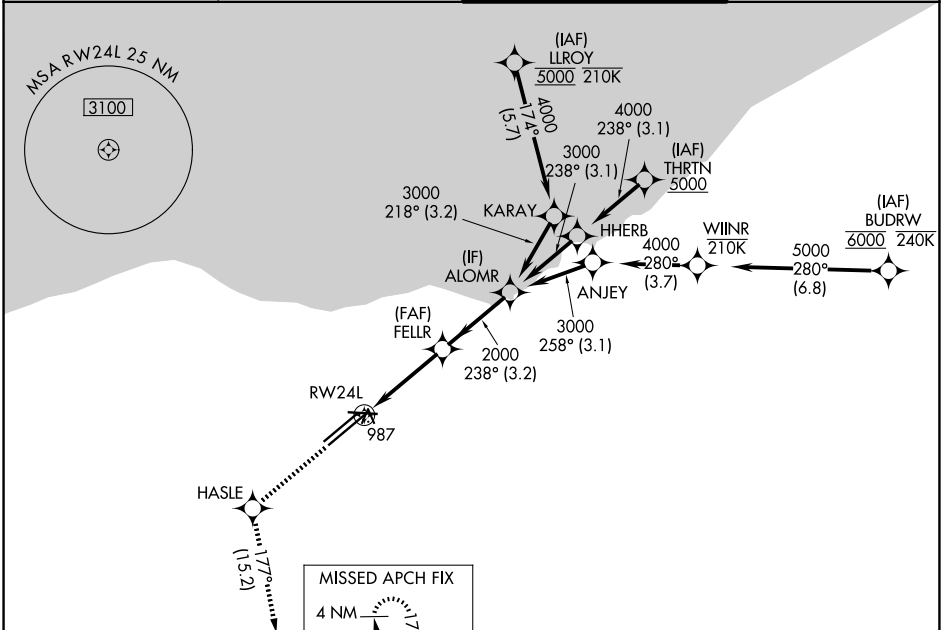
WAAS CH 77506 W24B	APP CRS 238°	Rwy Ldg TDZE Apt Elev	9953 786 799
--	------------------------	-----------------------------	---

RNAV (GPS) Y RWY 24L

CLEVELAND-HOPKINS INTL (CLE)

RNP APCH. ▼ Circling Rwy 10 NA at night. For uncompensated Baro-VNAV systems, LNAV/VNAV NA below -19°C or above 54°C.	MALSR 	MISSED APPROACH: Climb to 3000 direct HASLE and on track 177° to SAROW and hold.
--	-----------	--

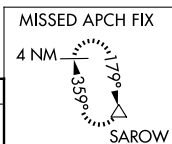
D-ATIS 127.85	CLEVELAND APP CON 126.55 346.325	CLEVELAND TOWER 124.5 273.45	GND CON 121.7 273.45
-------------------------	--	--	--------------------------------



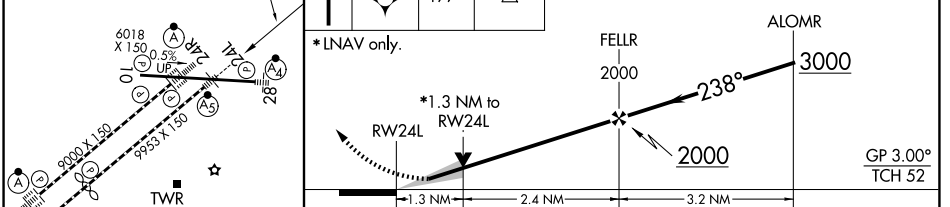
EC-2, 14 MAY 2026 to 11 JUN 2026

EC-2, 14 MAY 2026 to 11 JUN 2026

ELEV 799	D	TDZE 786
----------	----------	----------



3000	HASLE	SAROW	VGSI and RNAV glidepath not coincident (VGSI Angle 3.00/TCH 48).
------	-------	-------	--



CATEGORY	A	B	C	D
LPV DA		986/18	200 (200-½)	
LNAV/VNAV DA		1180/35	394 (400-⅝)	
LNAV MDA	1240/24	454 (500-½)	1240/45	454 (500-⅞)
CIRCLING	1420-1	621 (700-1)	1420-1¾ 621 (700-1¾)	1420-2 621 (700-2)

REIL Rwy 10
TDZ/CL Rwy 6L, 6R, 24L and 24R
HIRL Rwy 6L-24R, 6R-24L and 10-28