

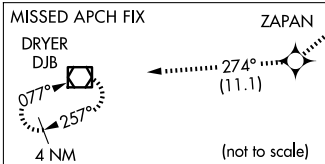
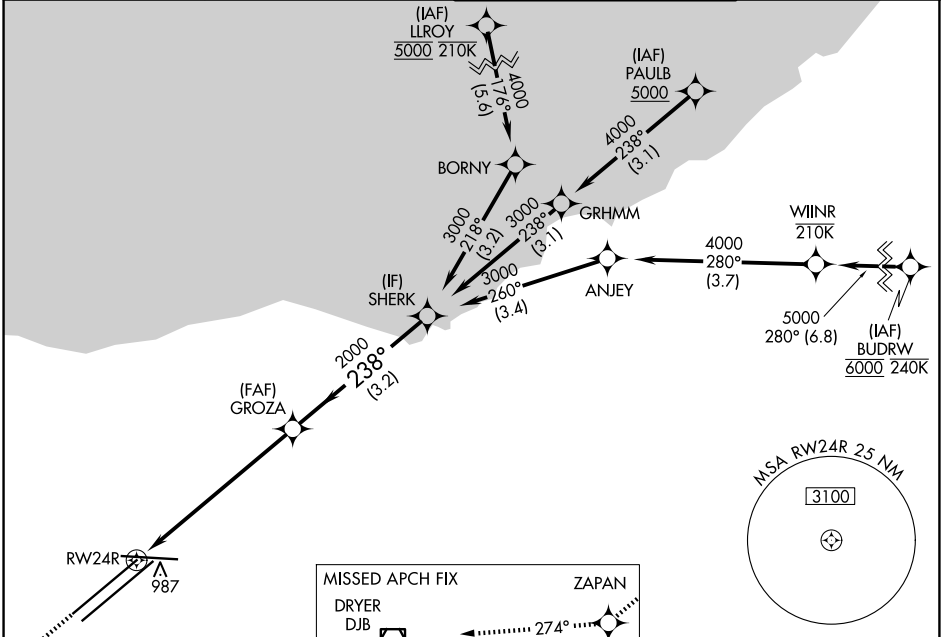
WAAS CH 60904 W24A	APP CRS 238°	Rwy Ldg TDZE Apt Elev	9000 780 799
--	------------------------	-----------------------------	---

RNAV (GPS) Y RWY 24R

CLEVELAND-HOPKINS INTL (CLE)

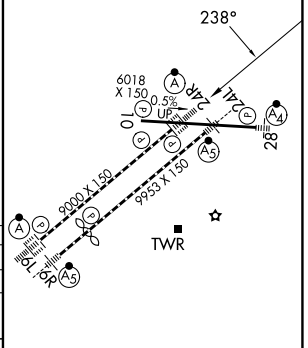
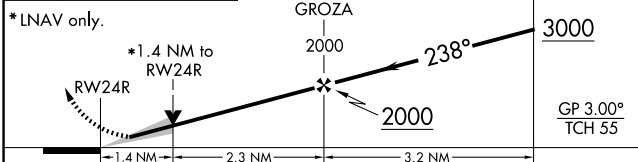
RNP APCH. ▼ Circling Rwy 10 NA at night. For uncompensated Baro-VNAV systems, LNAV/VNAV NA below -19°C or above 54°C.	ALSF-2 A	MISSED APPROACH: Climb to 3000 direct ZAPAN and on track 274° to DJB VOR/DME and hold.
--	-------------	--

D-ATIS 127.85	CLEVELAND APP CON 126.55 346.325	CLEVELAND TOWER 124.5 273.45	GND CON 121.7 273.45
-------------------------	--	--	--------------------------------



ELEV	799	D	TDZE	780
------	-----	---	------	-----

3000	ZAPAN	tr 274°	DJB	VGSI and RNAV glidepath not coincident (VGSI Angle 3.00/TCH 65).
------	-------	---------	-----	--



CATEGORY	A	B	C	D
LPV DA		980/18	200 (200-½)	
LNAV/VNAV DA		1168/35	388 (400-⅝)	
LNAV MDA	1240/24	460 (500-½)	1240/45	460 (500-⅝)
CIRCLING	1420-1	621 (700-1)	1420-1¾	1420-2
		621 (700-1¾)	621 (700-2)	621 (700-2)

REIL Rwy 10
TDZ/CL Rwy 6L, 6R, 24L and 24R
HIRL Rwy 6R-24L, 6L-24R and 10-28