

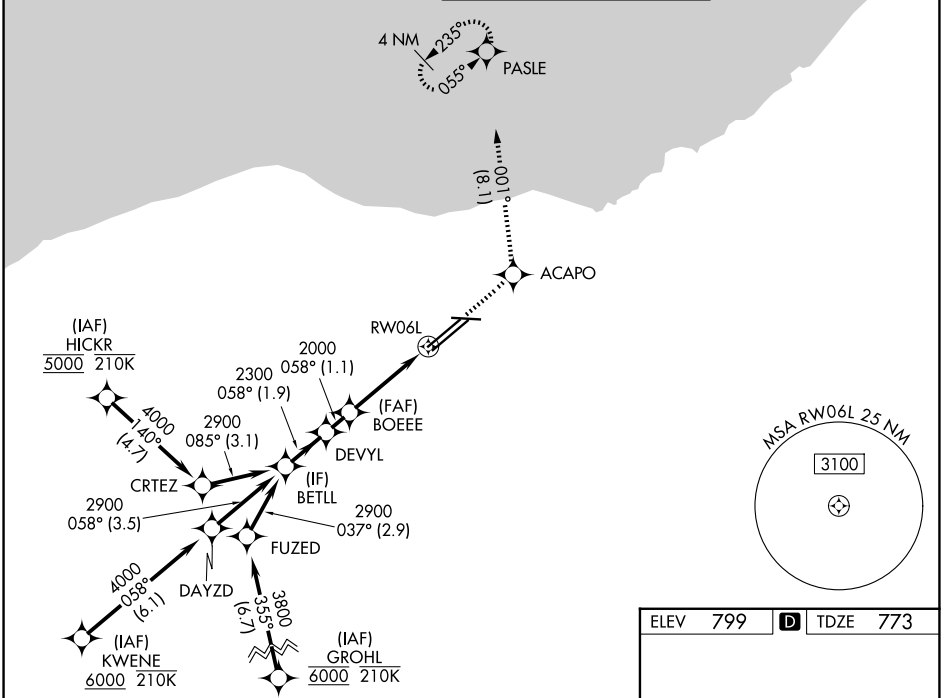
WAAS CH 56204 W06A	APP CRS 058°	Rwy Ldg 9000 TDZE 773 Apt Elev 799
--	------------------------	---

RNAV (GPS) Y RWY 6L

CLEVELAND-HOPKINS INTL (CLE)

RNP APCH.	ALSF-2 	MISSED APPROACH: Climb to 3000 direct ACAPO and on track 001° to PASLE and hold.
<p>▼ For uncompensated Baro-VNAV systems, LNAV/VNAV NA below -18°C (0°F) or above 54°C (130°F). Circling Rwy 10 NA at night. For inop ALS, increase LNAV/VNAV all Cats visibility to RVR 5500 and increase LNAV Cats C/D visibility to 1½ SM.</p>		

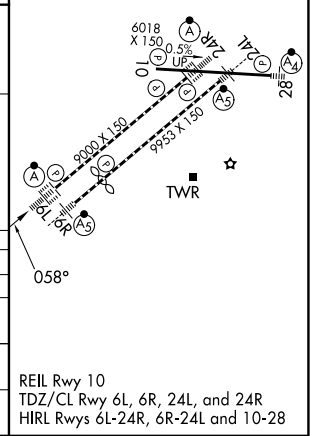
D-ATIS 127.85	CLEVELAND APP CON 126.55 346.325	CLEVELAND TOWER 124.5 273.45	GND CON 121.7 273.45
-------------------------	--	--	--------------------------------



ELEV 799	D TDZE 773
----------	-------------------

VGSI and RNAV glidepath not coincident (VGSI Angle 3.00/TCH 69).

BETLL	DEVYL	BOEEE	ACAPO	PASLE
2900	2300	2000	3000	tr 001°
GP 3.00° TCH 55		*LNAV only.		
1.9 NM		1.1 NM	2.4 NM	1.3 NM
CATEGORY	A	B	C	D
LPV DA	973/18		200 (200-½)	
LNAV/VNAV DA	1120/30		347 (400-⅔)	
LNAV MDA	1260/24 487 (500-½)		1260/50 487 (500-1)	
CIRCLING	1420-1 621 (700-1)		1420-1¾ 621 (700-1¾) 1420-2 621 (700-2)	



EC-2, 14 MAY 2026 to 11 JUN 2026

EC-2, 14 MAY 2026 to 11 JUN 2026