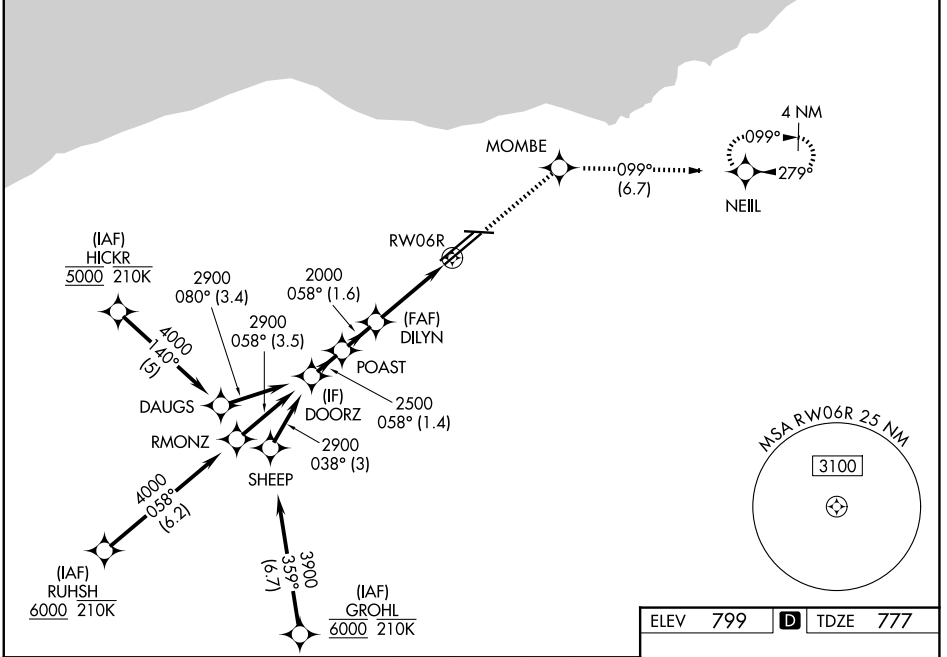


WAAS CH 81806 W06B	APP CRS 058°	Rwy Ldg 8029 TDZE 777 Apt Elev 799
--	------------------------	---

RNAV (GPS) Y RWY 6R

CLEVELAND-HOPKINS INTL (CLE)

RNP APCH.		MALSR	MISSED APPROACH: Climb to 3000 direct MOMBE and on track 099° to NEILL and hold.
<p>▼ For uncompensated Baro-VNAV systems, LNAV/VNAV NA below -18°C (0°F) or above 46°C (114°F). Circling Rwy 10 NA at night. For inop ALS, increase LNAV Cats C/D visibility to 1½ SM.</p>			
D-ATIS 127.85	CLEVELAND APP CON 126.55 346.325	CLEVELAND TOWER 124.5 273.45	GND CON 121.7 273.45



EC-2, 14 MAY 2026 to 11 JUN 2026

EC-2, 14 MAY 2026 to 11 JUN 2026

VGSi and RNAV glidepath not coincident (VGSi Angle 3.00/TCH 73). 3000 ↑ MOMBE tr 099° NEILL *LNAV only.	
GP 3.10° TCH 58 2900 2500 2000 2000 1.4 NM 1.6 NM 2.2 NM 1.4 NM	DOORZ POAST DILYN RWY 6R 1.4 NM to RWY 6R
CATEGORY	A B C D
LPV DA	977/18 200 (200-½)
LNAV/VNAV DA	1227/45 450 (500-¾)
LNAV MDA	1260/24 483 (500-½) 1260/50 483 (500-1)
CIRCLING	1420-1 621 (700-1) 1420-1¾ 621 (700-1¾) 1420-2 621 (700-2)

